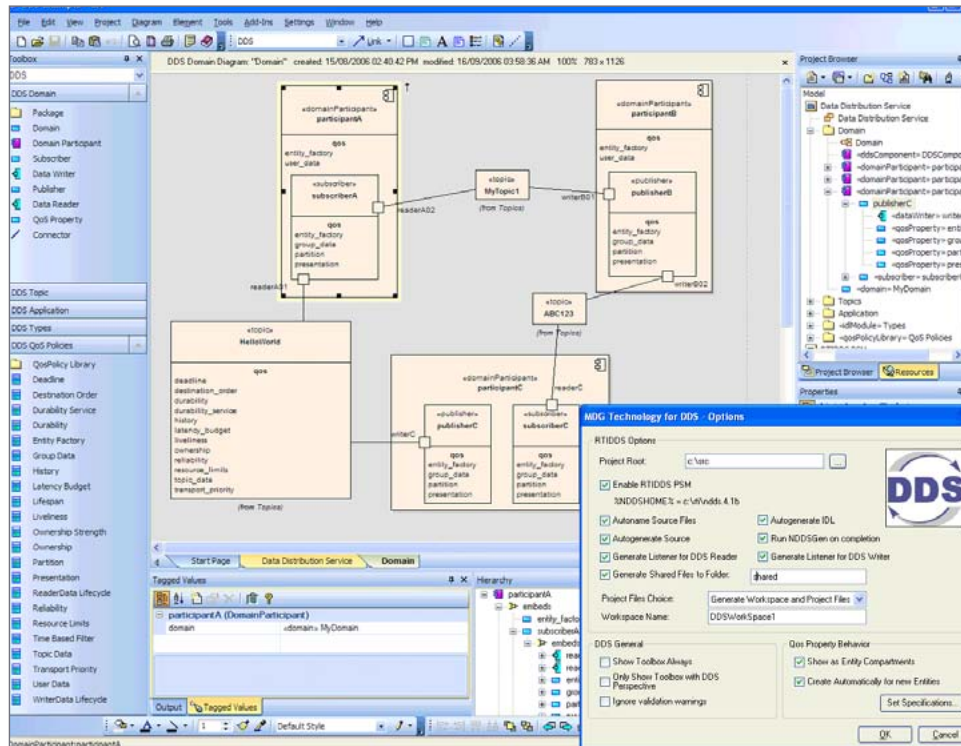


# DDS™

Design complex publish-subscribe data services for real-time and embedded applications using Enterprise Architect.



Sparx Systems Enterprise Architect supports modeling complex, data-centric publish-subscribe services for OpenSplice and RTI DDS applications using UML 2.5.

With advanced modeling capabilities, low cost and a wealth of innovative features, Enterprise Architect and MDG Technology for DDS is the premier team-based design environment for creating DDS applications.



**Instantly Create your  
Global Data Space**

# Data Distribution Services

## Design real-time data distribution services for OpenSplice and RTI DDS using UML today!

**Create, Edit and Integrate Data-Centric Publish-Subscribe Services** using UML 2.5 and the UML Profile for DDS. Specify Quality of Service policies to govern reliability and resource limits.

**Link Topic Data to Reconstruction Classes for optimum data access.** Use Data Local Reconstruction to unify DDS data from multiple topics to create integration-ready APIs for user applications.

**Generate Integration-Ready, Executable Source Code** for heterogeneous DDS applications. Use Model Driven Architecture to produce C, C++, C# or Java source code for both the OpenSplice and RTI DDS platforms using MDA Transformation.

### Extensible UML 2.5 Modeling

Use UML 2.5's extensibility to capture and share DDS designs with other UML software designs, BPMN business processes and SysML system models.

### Create rigorous, valid DDS designs

Take advantage of support for model validation to ensure the correctness of DDS design models.

### Features:

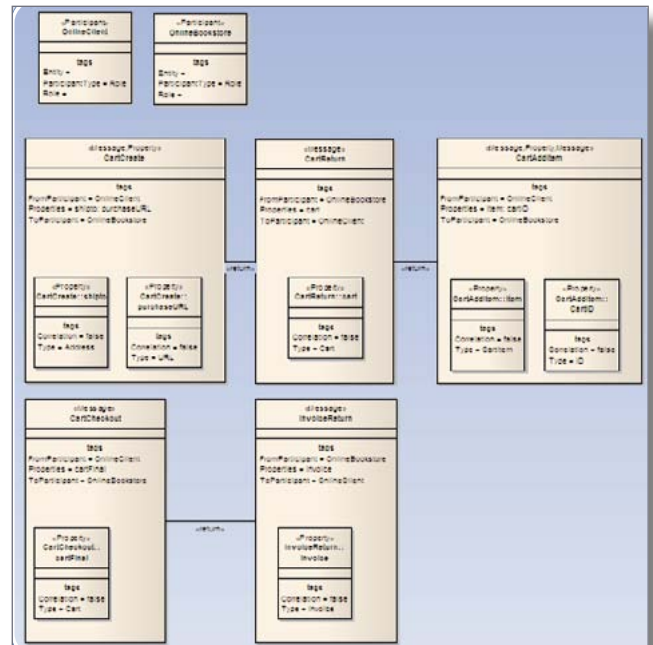
- Specify Data-Centric Publishers, Subscribers, Topics and QoS Policies
- Define Data Local Reconstruction mappings for effective DDS data access
- Create heterogeneous DDS applications across different host environments
- Generate executable source code in C, C++, C# and Java using MDA (Model Driven Architecture)
- Target DDS implementations for the RTI and OpenSplice platforms

**OpenSplice** | **DDS**

Sparx Systems:  
DDS Solution Provider and  
Technical Partner with  
PrismTech



Sparx Systems:  
DDS Solution Provider  
and Technical Partner  
with RTI



Instantly create your  
Global Data Space

All product names are owned by their respective owners