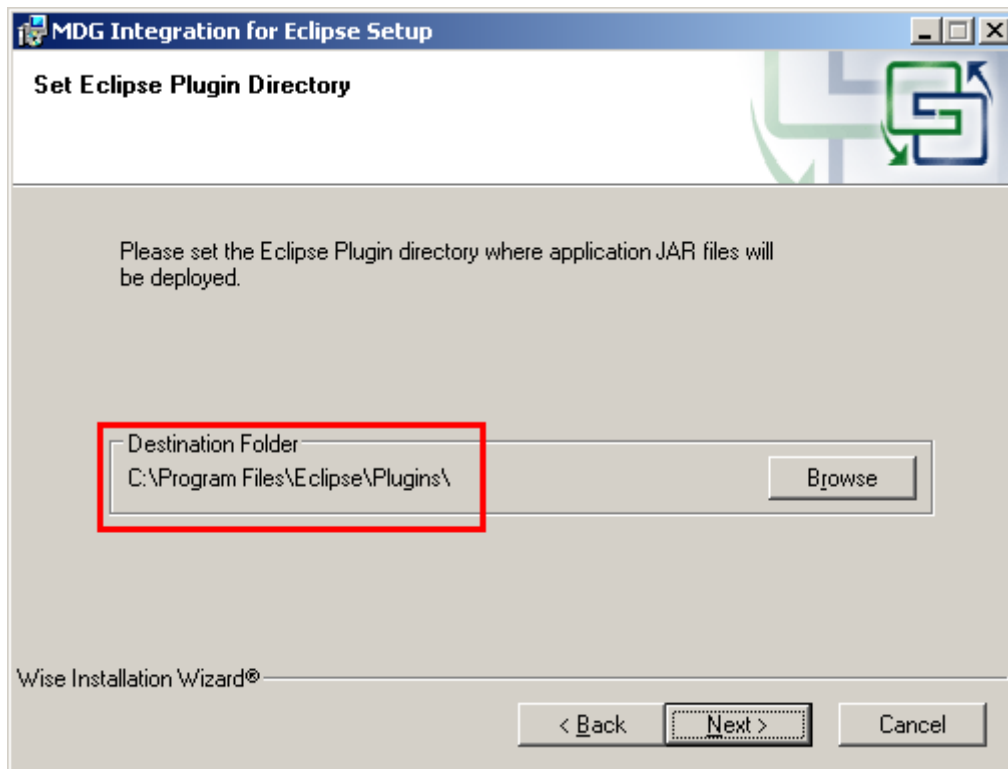
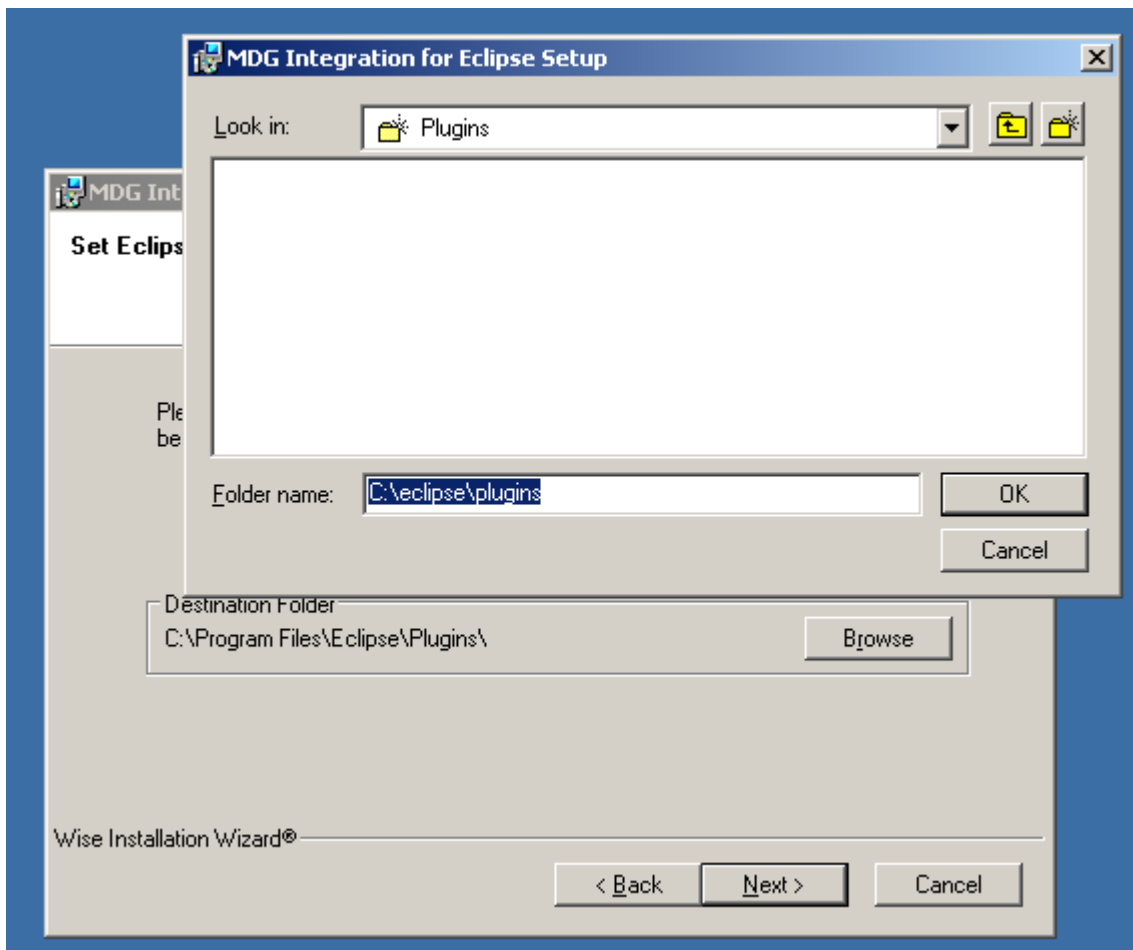


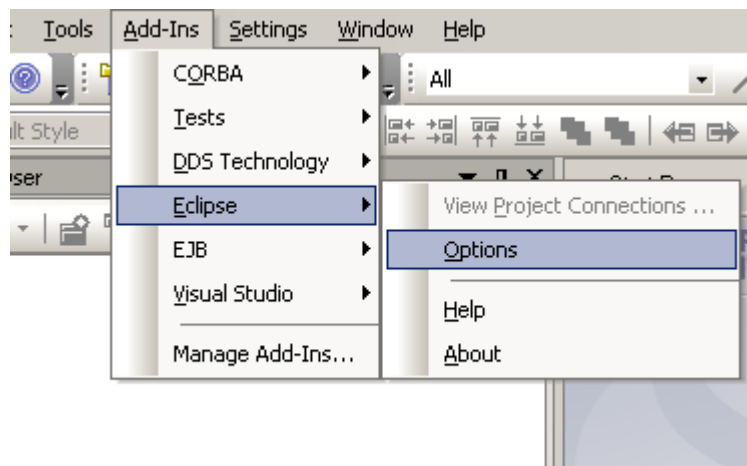
MDG Integration for Eclipse Installation Guide

- 1) Download the MDG Integration for Eclipse from the Sparx Systems website. (http://www.sparxsystems.com.au/bin/EAEclipse_Integration.exe).
- 2) If you have already installed the Eclipse Integration, it will need to be uninstalled. To do so, go to “Control Panel | Add or Remove Programs”. After you have done this, run EAEclipse_Integration.exe.
- 3) During the install process, the installer will ask you for your Eclipse plug-in directory. The default directory is “...\Program Files\Eclipse\Plugins”, click “Browse” to change the default setting.

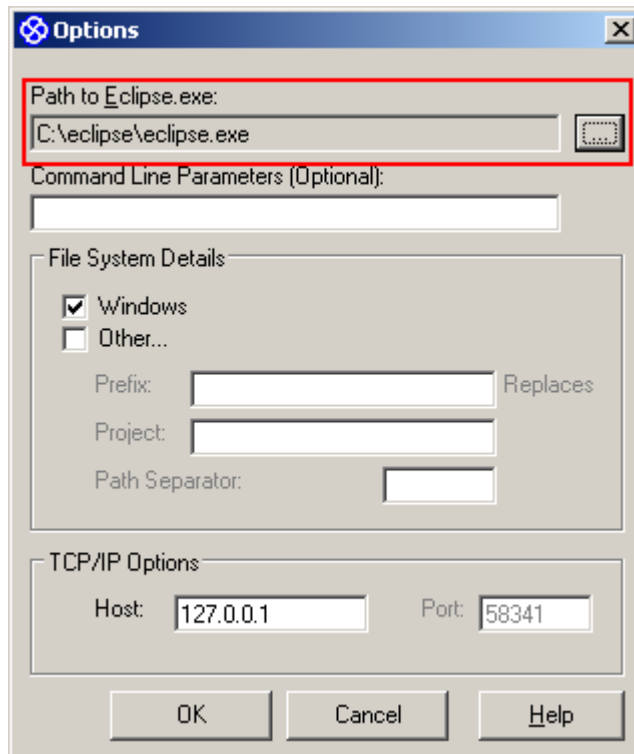




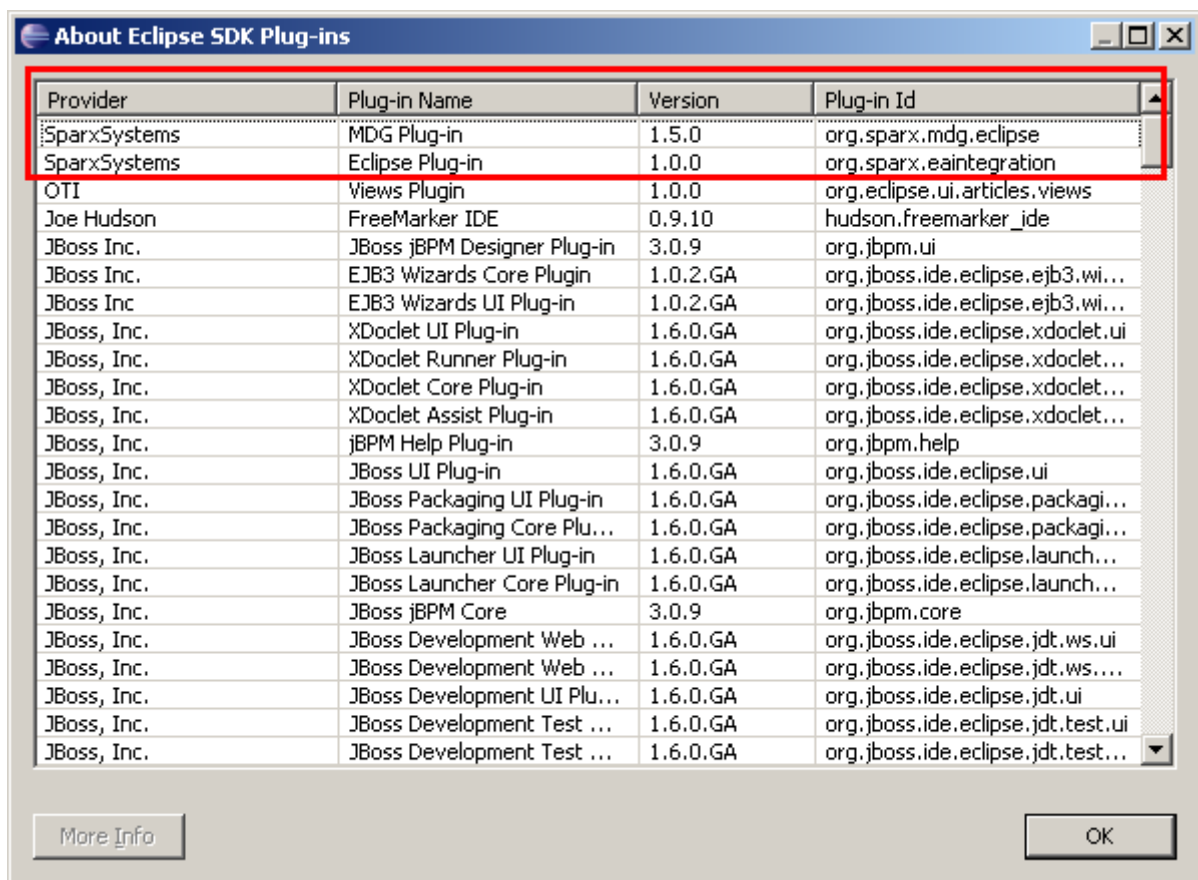
- 4) After installing the Eclipse Integration, open Enterprise Architect. Go to “Add Ins | Eclipse | Options”.



In the “Options” dialog box, set the path to your Eclipse.exe file.



- 5) Open Eclipse, select “Menu | Help | About Eclipse SDK”
 Then select “Plug-in Details” from the “About Eclipse SDK” dialog box
 Make sure the plug-ins “MDG Plug-in” and “Eclipse Plug-in” are on the list



If you cannot find them there, please check the file “org.sparx.mdg.eclipse_X.X.jar” and the file “org.sparx.eaintegration__X.X.X.jar” in Eclipse's plug-ins directory.

If these two files are present, close Eclipse and go to Eclipse's configuration directory and delete all files except “config.ini”. Open Eclipse again, and Eclipse should load these two files.

If the Eclipse Integration is still not working please report a bug to http://www.sparxsystems.com.au/support/bug_report.html or send an email to support@sparxsystems.com.au