

Introducing the Pro Cloud Server

Overview

The Sparx Systems Pro Cloud Server product works via a web-browser in conjunction with a cloud based Enterprise Architect repository, to allow security based sharing of repository content with anyone, using a smart phone, tablet or computer.

The Sparx Systems Pro Cloud server web technology, meets the demand for collaborative, model based change management solutions, arising from the global digital transformation trend.

For Enterprise Architect users this enabling technology exposes the entire enterprise modeling effort to share and contribute to, ensuring that stakeholders stay connected, from anywhere on the planet, with the assurance of secure privilege based access.



Pro Cloud Server with WebEA on desktop, tablet and smartphone.

Context

The Sparx Systems Pro Cloud Server is an extension to the Cloud Server and requires the EA Client to be installed, whereas the Pro

Cloud Server will run on any device with a Web Browser and Internet connection.

The Pro Cloud Server is not intended to replace the EA Client but to provide a full model viewing capacity and a light-weight interface allowing models to be discussed, reviewed, searched, annotated and added to.



Who will Benefit

The Sparx Systems Pro Cloud Server revolutionizes the concept of 'workplace' by removing the constraints of location. Stakeholders can easily find and choose the technology tools they need to do their work effortlessly, from anywhere. This collaboration platform makes models accessible to all stakeholders:

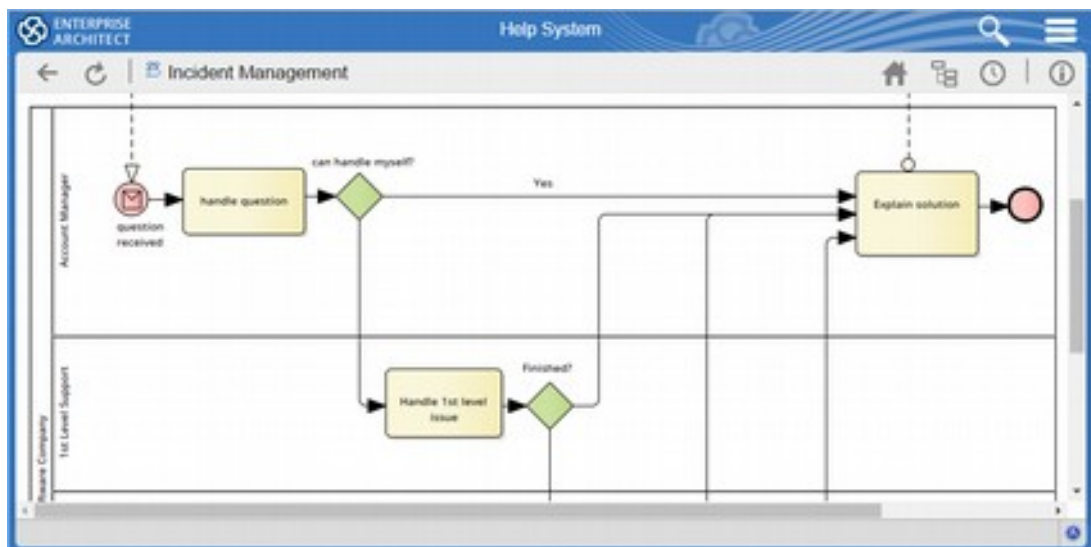
- **Members of the Team** - viewing models away from their desks and offices,
- **Business Executives and Managers** - in a taxi on their way to a meeting,
- **Customers** - in their own offices keeping in touch with implementation teams,
- **Suppliers and Consultants** - contributing to the models and adding expertise,
- **Testers and Support Analysts** - viewing the systems details,
- **Experts and Industry Leaders** - formally reviewing model content,
- **Standards Developers** - contributing to and reviewing content,
- **Anyone with an Interest in the Model** - keeping in touch.

The product has a clean and appealing graphical interface that has been designed for the mobile world and can be viewed through a Web Browser on smart phones, tablets notebooks and desktop computers. The following section lists some of the benefits.

What are the Benefits

Real-time views

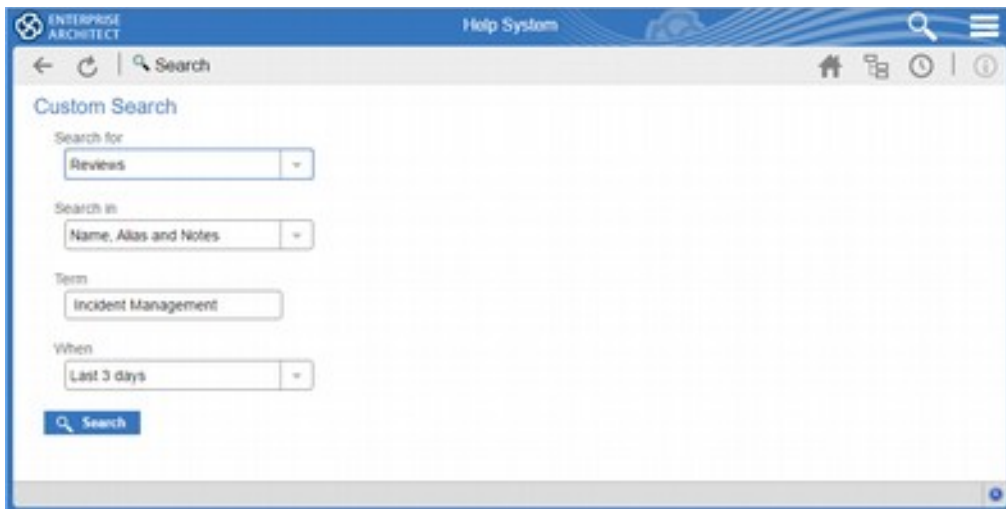
Prior to the Pro Cloud Server, sharing repository content required a consumer or stakeholder either having the Enterprise Architect client installed, either a full license or read only version, or viewing documentation and web pages published from the repository. In many cases this approach was a significant improvement from previous methods, however this could also be improved upon. With the Pro Cloud Server a **user enjoys a real-time view of the repository content** from any type of mobile device fitted with a web browser including Smart Phones, Tablets and Notebooks.



BPMN Process diagram showing the latest changes.

Anyhow, anywhere...

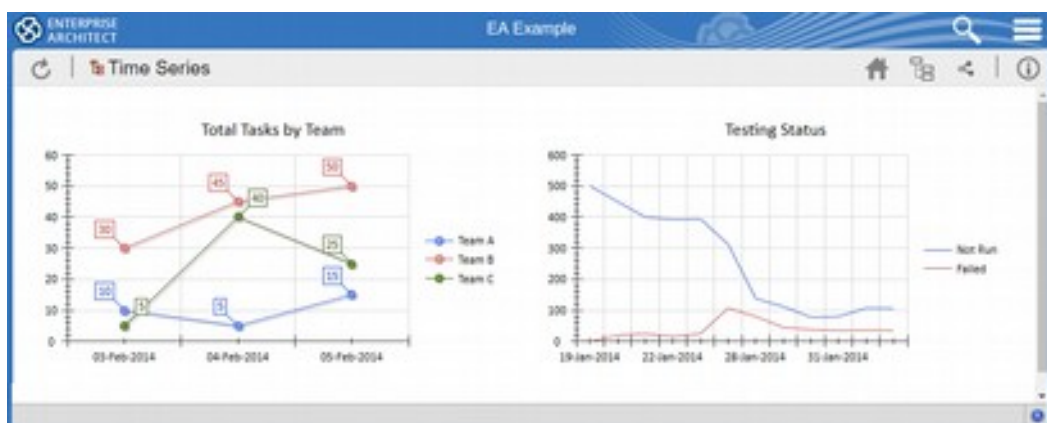
Repository information can be consumed and searched from the comfort of your armchair at home, at the airport lounge, going to or from work on the train or bus or at your favorite down-town café by simply accessing the repository from your portable device. This allows people like executives, business managers, project managers, scrum masters, team leaders and others to stay connected with their teams.



Simple search interface allows a user to find anything.

Collaborate

The modern age has seen many people working remotely or organizations utilizing geographically dispersed resources. Even when people are based in the office they tend to spend a good deal of time away from their desk. **With WebEA they can collaborate across geographically dispersed regions** in different time-zones or while sitting at the gate or in the airport lounge. Improved collaboration within a project realizes additional benefits in areas of decision making, resource allocation, design choices and also policy implementation.

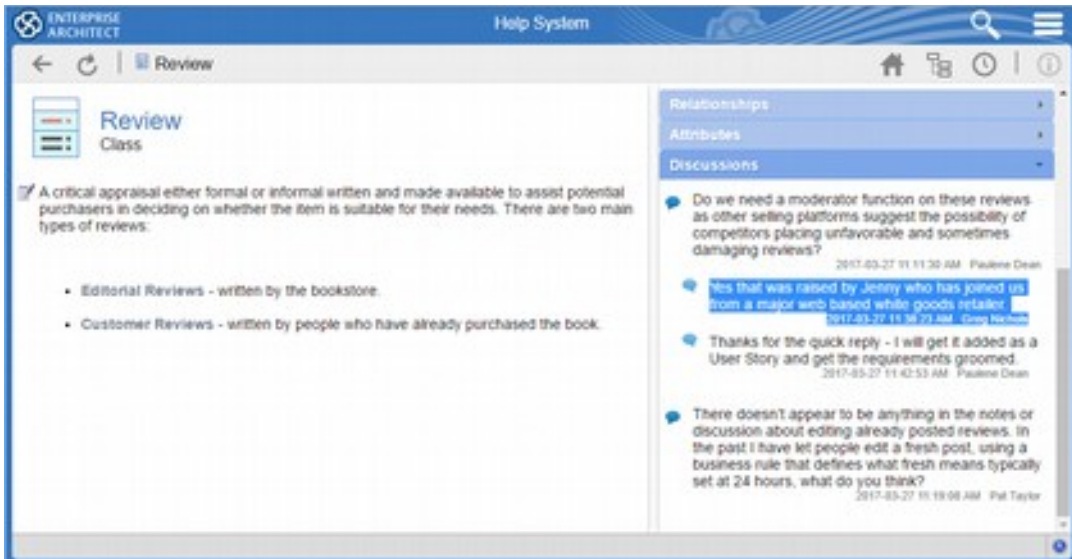


Dashboard diagram showing Charts and Graphs.

Review and discuss

Languages have both writers and readers. So too with modeling, some people will be creators of content including: elements and diagrams and models, others however will just be consumers of content and still

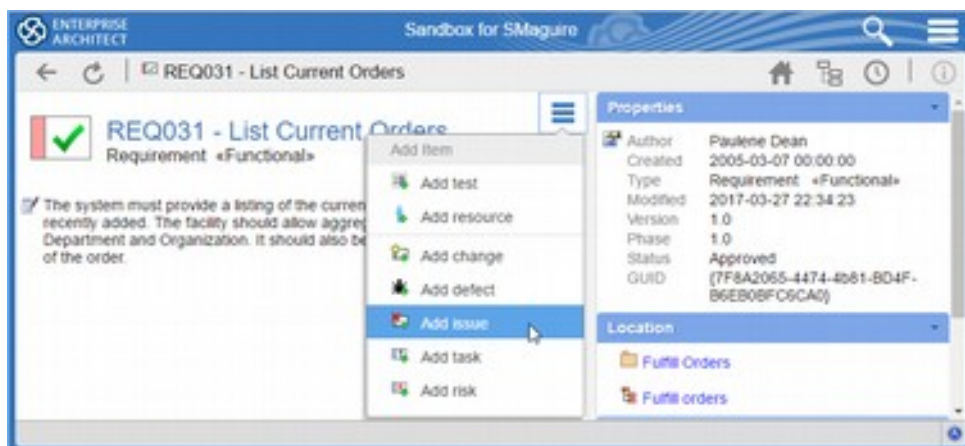
others will do both. WebEA not only allows users to view the content that has been created but **they are able to review it and enter into discussions about it** suddenly opening the door for greater interactivity with a wide range of customers, stakeholders and others. Improvements in areas of requirements development, customer centric design and stakeholder sign-off are also experienced.



Discussion Posts and Replies can be added to any element or diagram.

Contribute

Typically a business analysis project has a wide range of contributors, stakeholders and interested parties. Some of these people will want to actively contribute to the endeavor but do not have the Enterprise Architect client installed and may not have a modeling background or have knowledge of the modeling languages. **WebEA allows them to add content such as: requirements, business rules, policies, principles or constraints directly to the model.** The type of elements they are able to add can be configured by the Administrator, to limit as required.



Issue, Tasks, Risks, and any number of other elements such as requirements can be added.

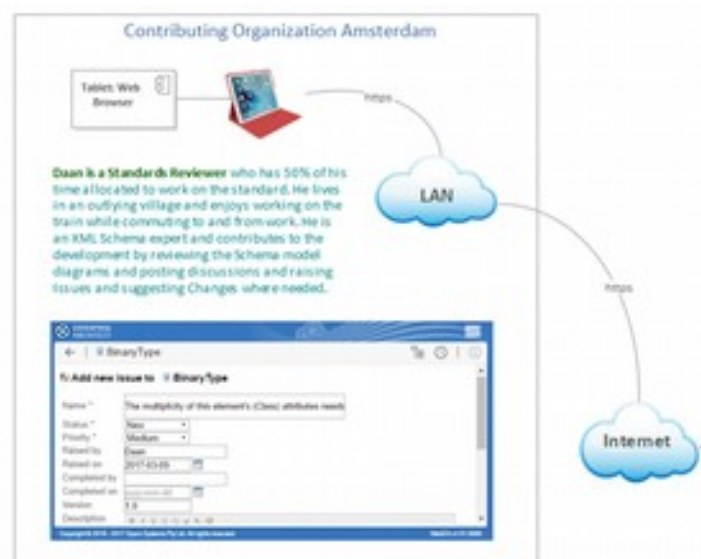
Why use the Pro Cloud Server?

An organization or team will gain great benefits from using WebEA and some of the traditional barriers that prevented people from accessing modeling information have been completely removed. This allows people

- **No client installation** - runs in a browser
- **Simple Setup** - no complex setup or configuration required,
- **Simple Clean look and Feel** - graphical interface designed for mobile,
- **No Training Required** - simple intuitive interface,
- **Repository in your pocket** - runs on smart phones, tablets and notebooks,
- **Any number of users** - no individual licenses required,
- **Multiple repositories** - access a predefined number of repositories.

No client installation

There is no need for any client installation - with nothing more than a hyperlink and some credentials a user can get started with WebEA. The tool runs in a web browser so it's simply a matter of opening your smart phone, tablet, notebook, or desktop computer and **you will have access to the wealth of information contained in the corporate repositories.** This also means that users can freely move between computers in an organization or even when they are visiting customer or consultant's premises.



Fragment of a deployment diagram showing connection to the Internet.

Simple clean look and feel

The web interface is compelling and a delight to use, allowing users with no experience or knowledge of the repository to get access to valuable repository information. It is graphical and intuitive, making it simple for users to access the content. In addition a repository will typically have a series of navigation pages, including a home page which can be created to provide hyperlinks to relevant content and can be tailored for particular audiences.



Example web page showing the simple and compelling interface with icons.

Assessable via intuitive design

Enterprise Architect is a sophisticated modeling platform with a wide range of functionality for both business and technical users and often requires training for people to get the most out of the application. WebEA on the other hand is a browser based tool which does not require any training and **people can get started in a few minutes.** This significantly lowers the barrier to adoption and appreciably

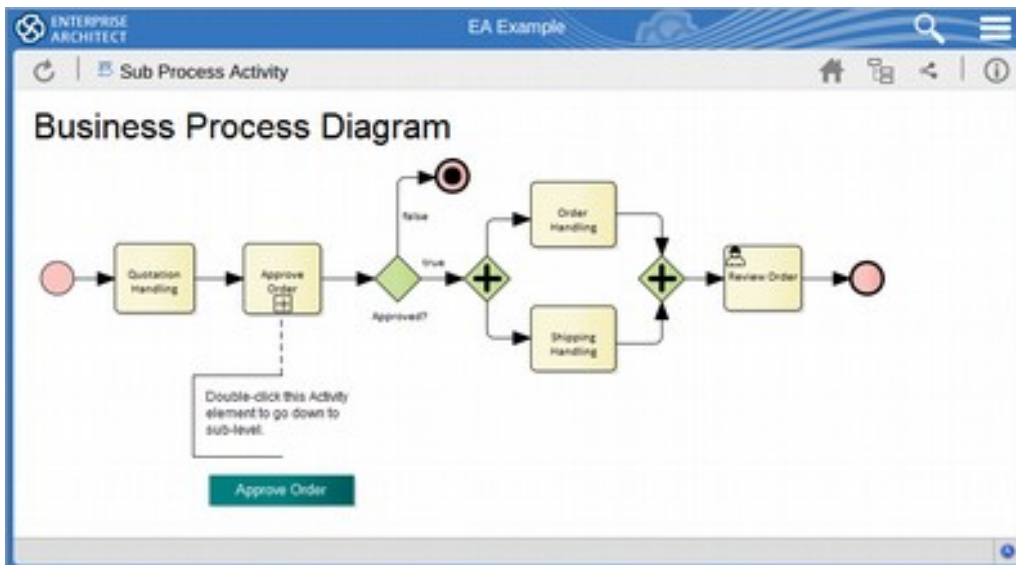
reduces the cost of on-boarding a new team member who needs to access the content in the repository.



Project Kanban diagram viewed on a tablet.

Repository in your pocket

Whether you are on the train, at the airport gate, at your favorite café or walking in the country access to your Enterprise Architect repositories is assured using WebEA on your smart phone or tablet. This fosters collaboration because users are not only able to view the information but are also able to enter into discussions and contribute to the model. There are many situations where a user can contribute something quite significant by just casting their eye over a diagram and offering an expert opinion from their professional perspective.



Business Process diagram viewed on a Tablet.

Any number of users

There is no restriction to the number of people that can access the repositories and they can be employees, contractors, customers, expert panels, or just interested parties - **it can be made available to anyone, anywhere**. This means that you are exempt from paying per user license fees and the information in the repositories can reach an unlimited number of unnamed users. Security of your enterprise repository is assured with the Pro Cloud Server via user management features such as Floating and Enterprise Licensing options; in addition, the adoption of Row Level Security allows for powerful database control.

Multiple repositories

WebEA allows an organization to publish up to three repositories from a single WebEA server and if required more repositories can be added for a small fee. This means that users can freely move between repositories by accessing a single hyperlink (URL)



Repository (model) selection page.

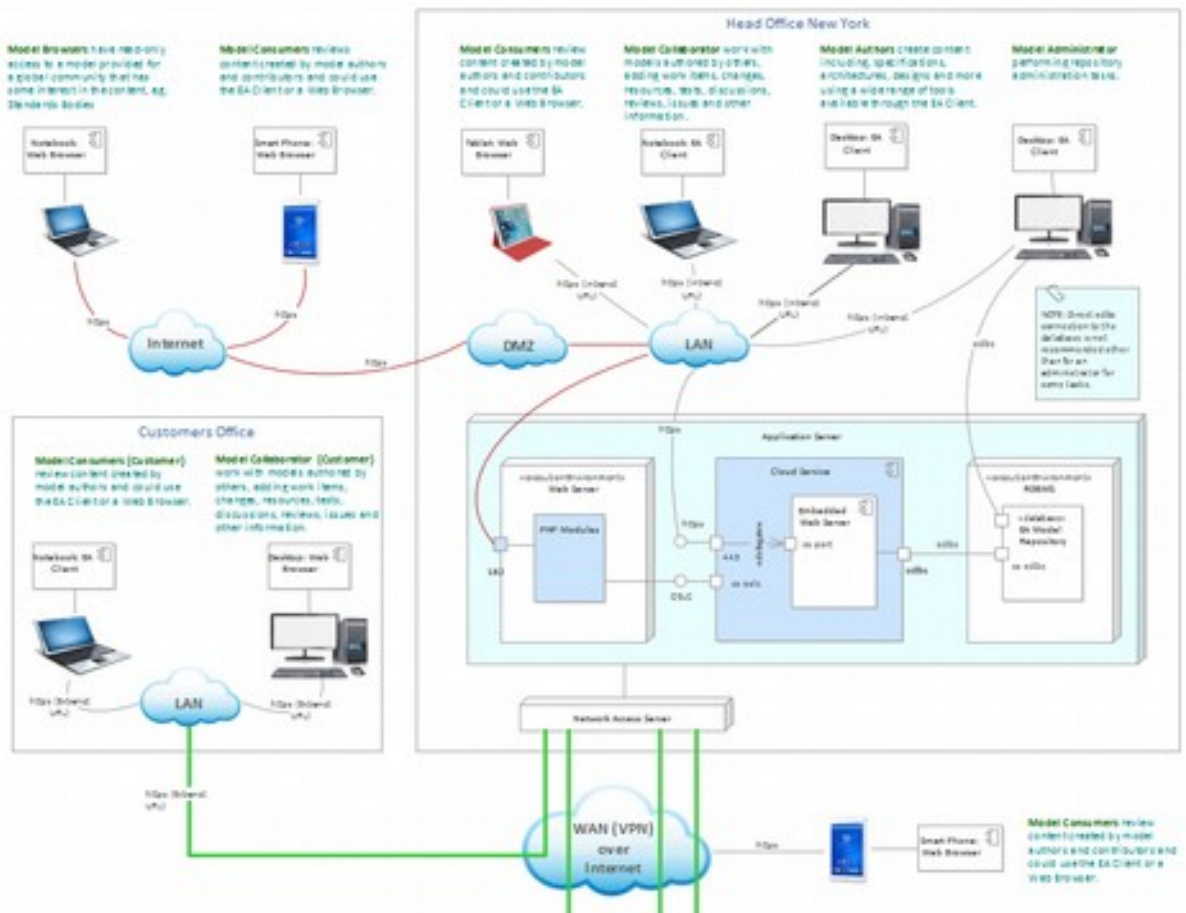
Key usage and deployment scenarios

WebEA is a powerful new addition to the Enterprise Architect toolset. It is used to consume, view, and contribute to models that are developed using the Enterprise Architect client software. It works in conjunction with the existing cloud services features and allows models to be accessed via private networks or the public internet. The following are some example deployment and usage scenarios that exemplify how it can be used.

- **Small Team** - of between 2 and 20 users,
- **Government Agency** - typically large with distributed offices,

- **Out of the Office** – staff members who spend a long time away from the office,
- **Branch Office** – a main office that has a number of distributed branches,
- **Standards Development** – a typically distributed team that develop standards,
- **Outsourced Team** – a model where work is requested from outlying providers,
- **Consulting Office** – an organization that typically provides services to clients.

The following diagram shows some of the ways that the information in the repository can be accessed securely using WebEA over the Internet or via a Virtual Private Network (VPN).



Deployment Overview showing some of the ways to connect to a repository.

Small Team

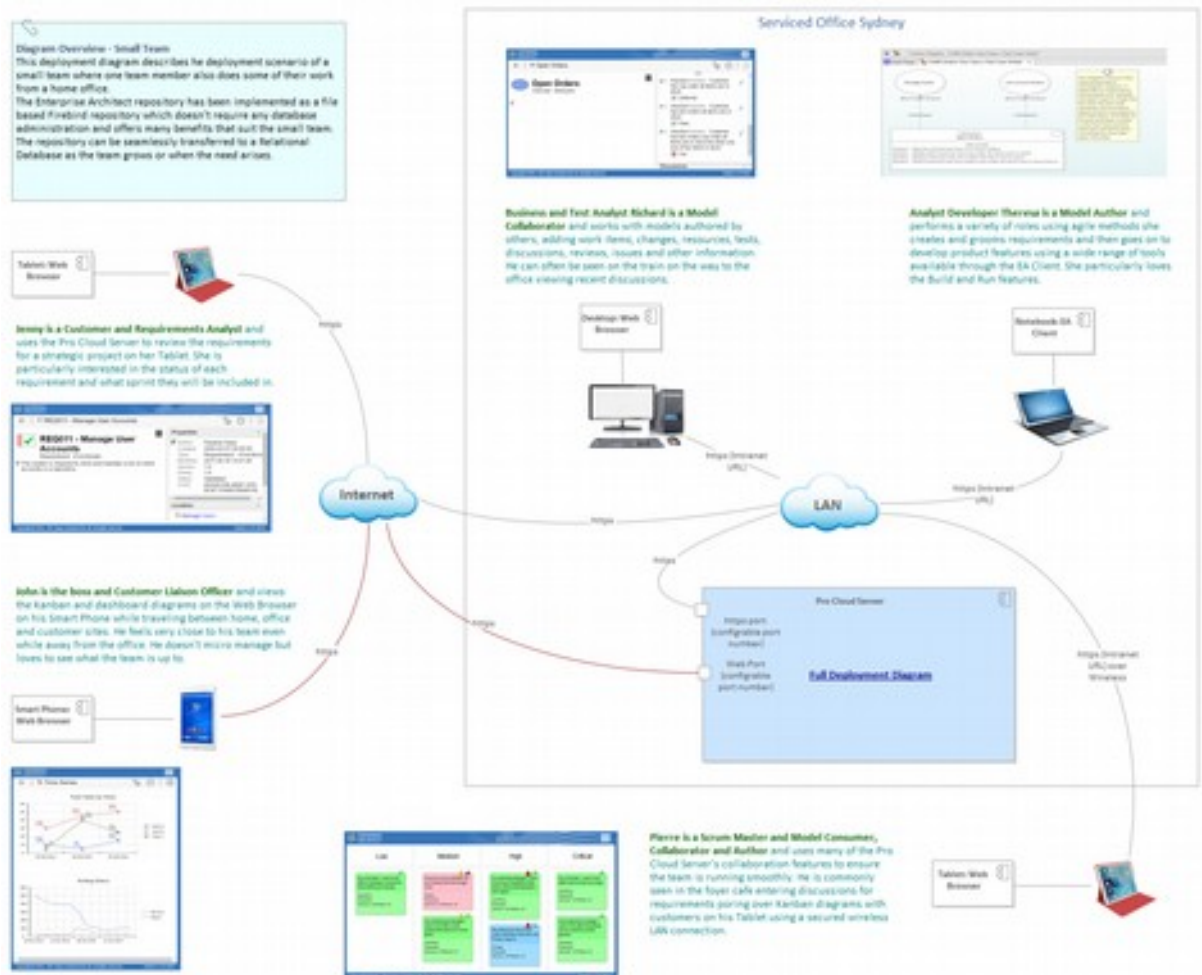
The organization operates out of a Serviced Office in the center of Sydney, Australia. The pay-as-you-go style of rent suits the team that looks like it will soon outgrow this arrangement and will need to move into bigger premises.

Meet one of the Team

John is the boss and Customer Liaison Officer and views the Kanban and dashboard diagrams on the Web Browser on his Smart Phone while traveling between home, office and customer sites. He feels very close to his team even while away from the office.

He doesn't micro manage but loves to see what the team is up to using a Dashboard diagram on his smart phone.

Explore the diagram to see how the team works!



Small Team Pro Cloud Server Deployment Scenario- Serviced Office Sydney.

The Enterprise Architect repository has been implemented as a file based Firebird repository which doesn't require any database administration and offers many benefits that suit the small team. The repository can be seamlessly transferred to a Relational Database as the team grows or when the need arises.

Government Agency

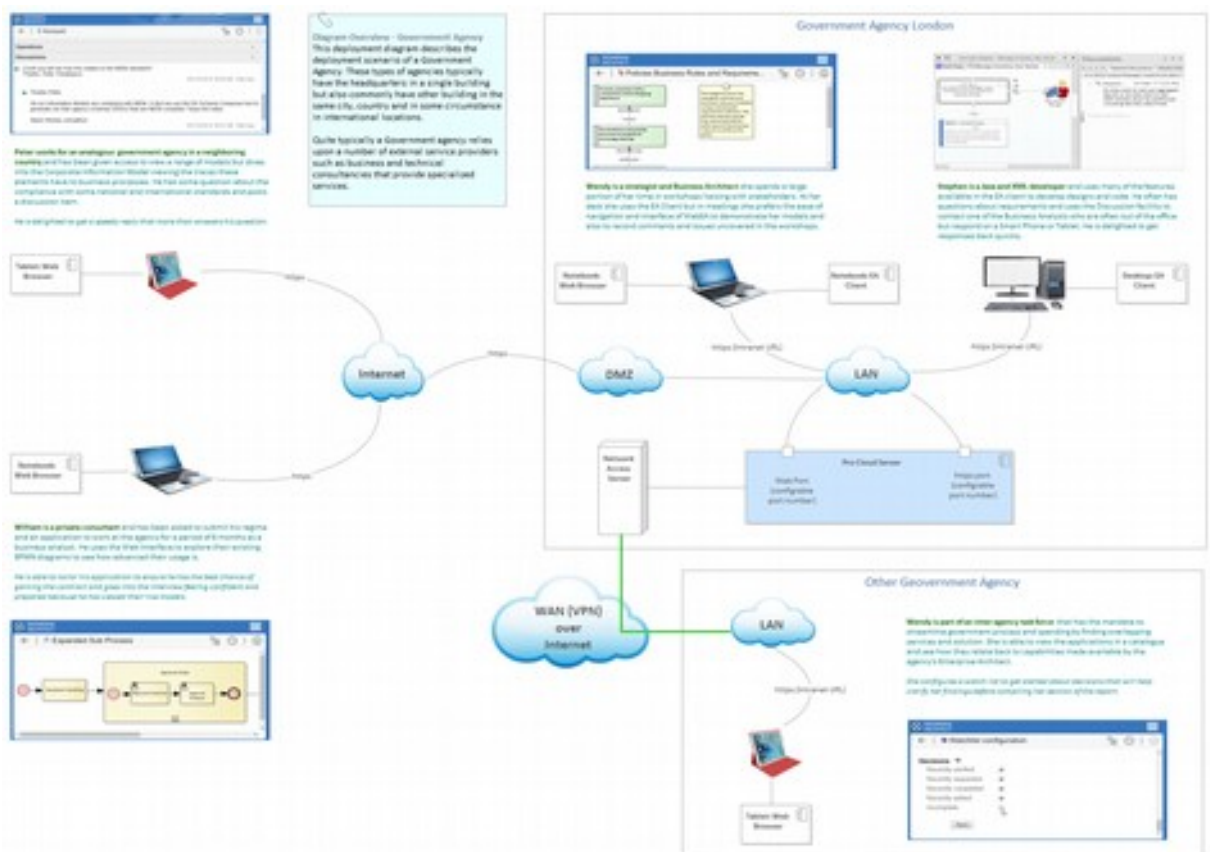
This deployment diagram describes the deployment scenario of a Government Agency. These types of agencies typically have the headquarters in a single building but also commonly have other building in the same city, country and in some circumstance in international locations.

Meet one of the Team

Jennifer is a Scrum Master who recently had a baby, she comes into the office once a fortnight but most of her work is done from home (while the baby is sleeping). She uses WebEA to view and follow discussions and view blockers. She runs the stand-up meetings and ensures everyone is looking at the Kanban diagrams and can see where Requirements and Issues are positioned.

She is so happy to be able to look after her baby but still be able to carry on work from home.

Explore the diagram to see how the team works!



Government Agency Pro Cloud Server Deployment Scenario-London.

Quite typically a Government agency relies upon a number of external service providers such as business and technical consultancies that provide specialized services.

Out of the Office

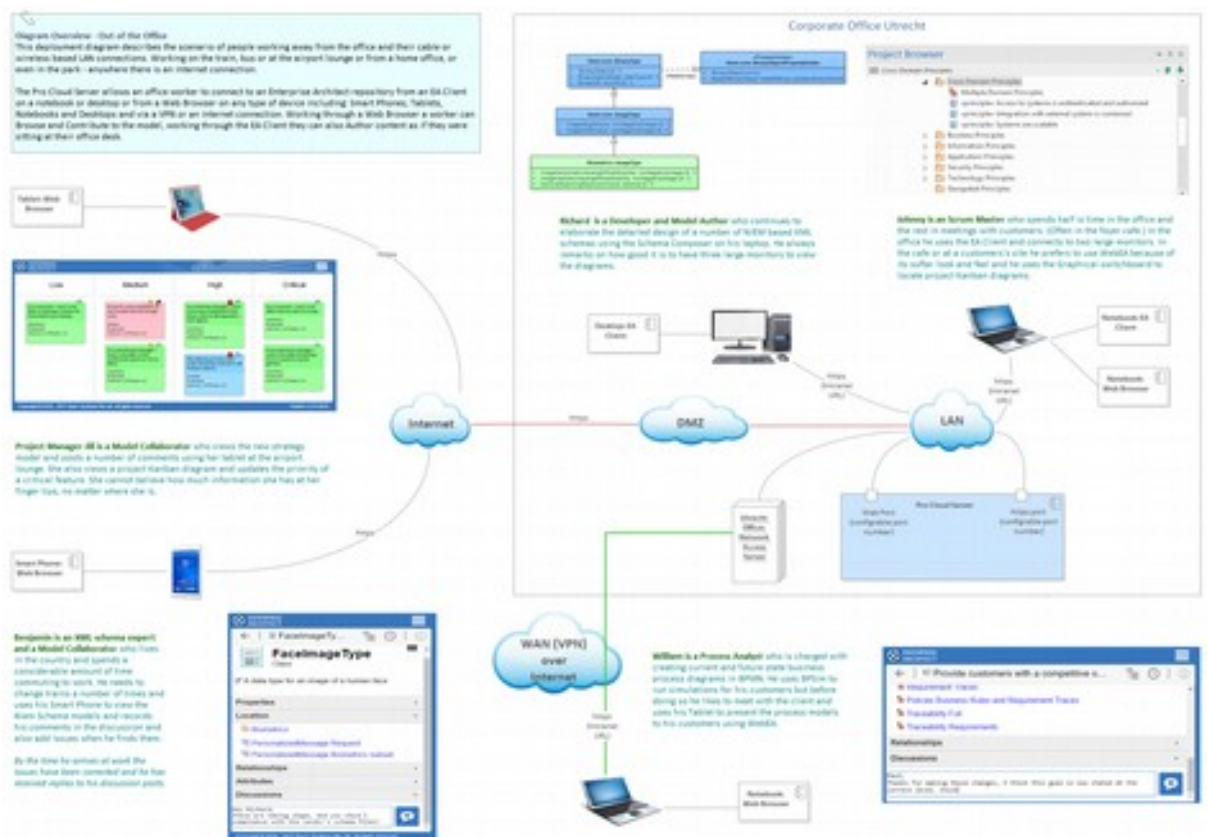
This deployment diagram describes the scenario of people working away from the office using their cable or wireless based LAN connections. Working on the train, bus or at the airport lounge, or from a home office, or even in the park - anywhere there is an Internet connection.

Meet one of the Team

Project Manager Jill is a Model Collaborator who views the new strategy model and posts a number of comments using her tablet at the airport lounge. She also views a project Kanban diagram and updates the priority of a critical feature.

She cannot believe how much information she has at her finger tips, no matter where she is.

Explore the diagram to see how the team works!



Out of the Office Pro Cloud Server Deployment Scenario-Corporate Office Utrecht.

The Pro Cloud Server allows an office worker to connect to an Enterprise Architect repository from an Enterprise Architect Client installation on a notebook or desktop or from a Web Browser on any

type of device including: **Smart Phones, Tablets, Notebooks and Desktops and via a VPN or an Internet connection**. Working through a Web Browser a worker can Browse and Contribute to the model, working through the EA Client they can also Author content as if they were sitting at their office desk.

Branch Office

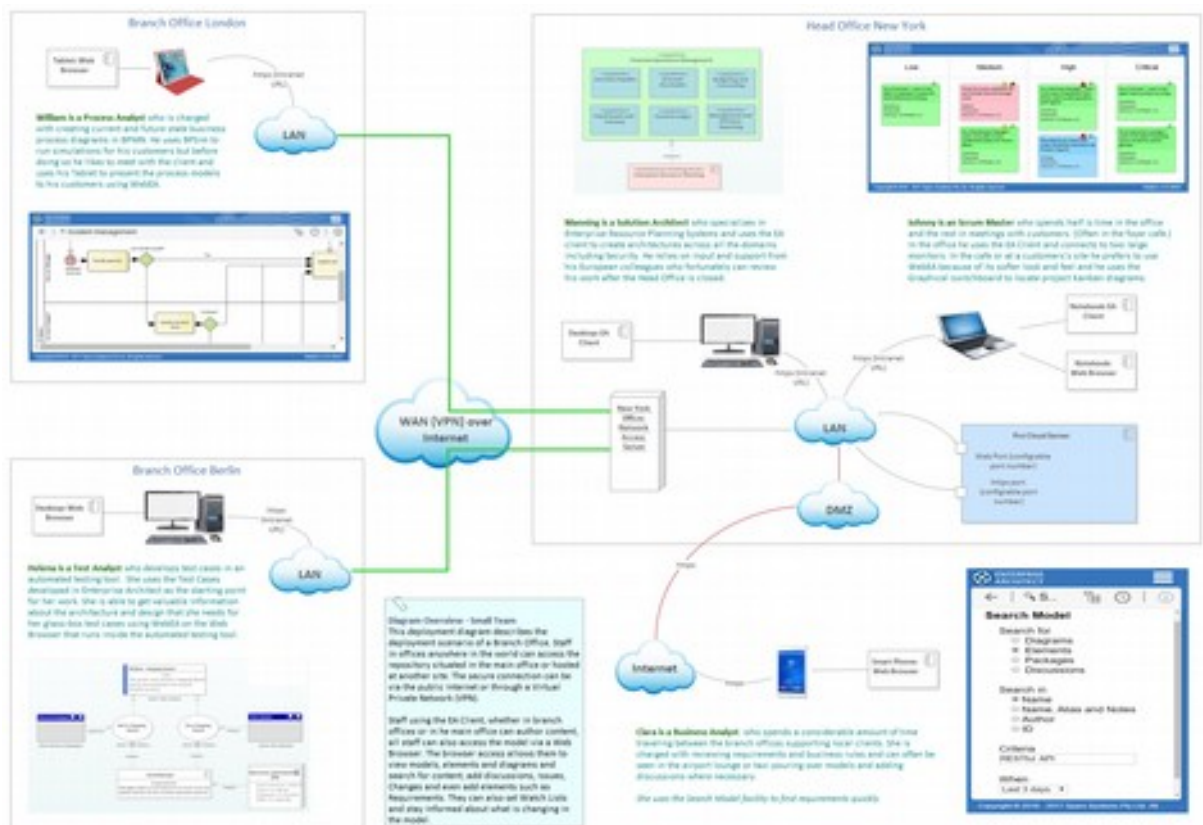
This deployment diagram describes the deployment scenario of a Branch Office. Staff in offices anywhere in the world can access the repository situated in the main office or hosted at another site. The secure connection can be via the public Internet or through a Virtual Private Network (VPN).

Meet one of the Team

Business Analyst Clara is a Model Collaborator who spends a considerable amount of time traveling between the branch offices supporting local clients. She is charged with reviewing requirements and business rules and can often be seen in the *airport lounge or taxi* using her *smart phone* and pouring over models and adding discussions where necessary.

She uses the Search Model facility to find requirements quickly.

Explore the diagram to see how the team works!



Out of the Office Pro Cloud Server Deployment Scenario - Head Office New York.

Staff using the EA Client, whether in branch offices or in the main office can author content, **all staff can also access the model via a Web Browser**. The browser access allows them to view models,

elements and diagrams and search for content, add discussions, Issues, Changes and even add elements such as Requirements. They can also set Watch Lists and stay informed about what is changing in the model.

Standards Development

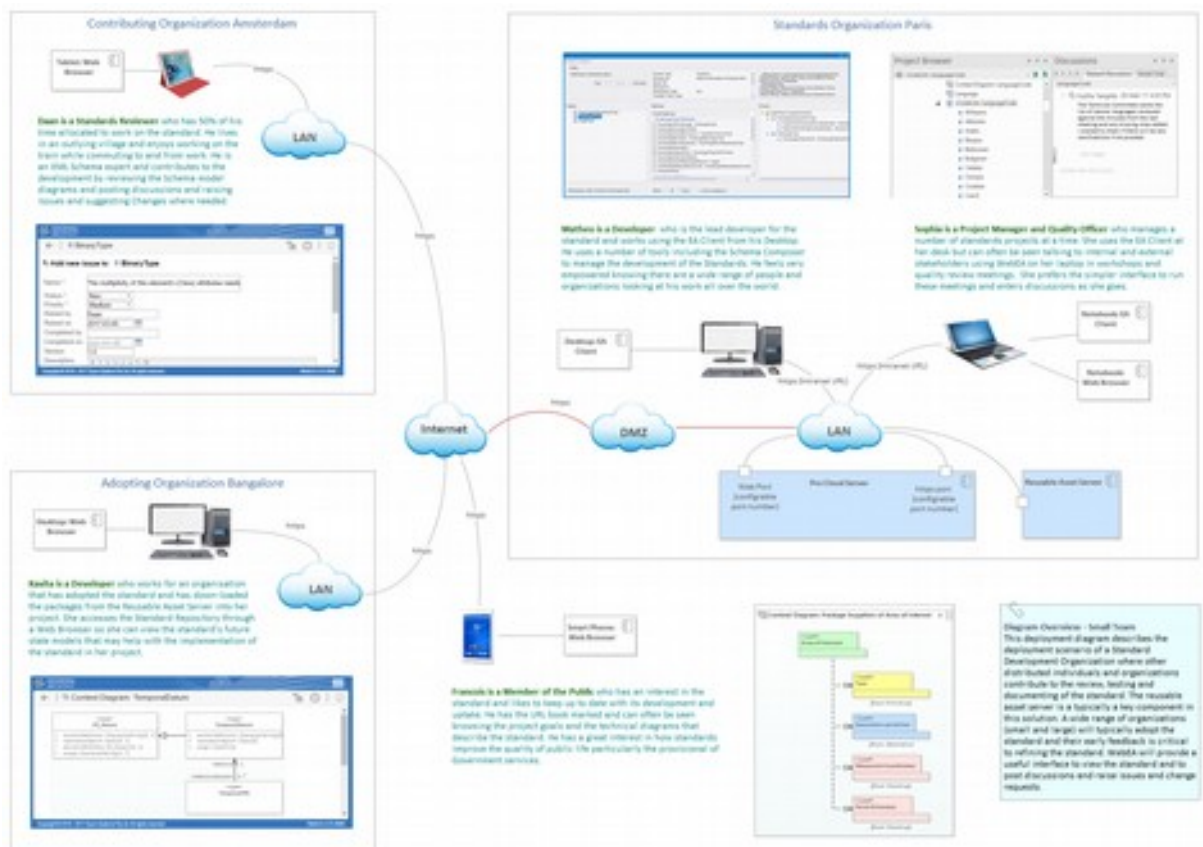
This deployment diagram describes the deployment scenario of a Standard Development Organization where other distributed individuals and organizations contribute to the review, testing and documenting of the standard.

Meet one of the Team

Francois is a Member of the Public and Model Browser who has an interest in the standard and likes to keep up to date with its development and uptake. He has the URL book marked and can often be seen using his smart phone to browse the project goals and the technical diagrams that describe the standard. He has a great interest in how standards improve the quality of public life particularly the provisional of Government services.

He feels empowered by his access to the models and plans to request permission to contribute.

Explore the diagram to see how the people collaborate!



Standards Development Pro Cloud Server Deployment Scenario -Standards Organization Paris.

The reusable asset server is typically a key component in this solution. A wide range of organizations (small and large) will typically adopt the standard and their early feedback is critical to refining the standard. WebEA will provide a useful interface to view the standard and to post discussions and raise issues and change requests.

Outsourced Team

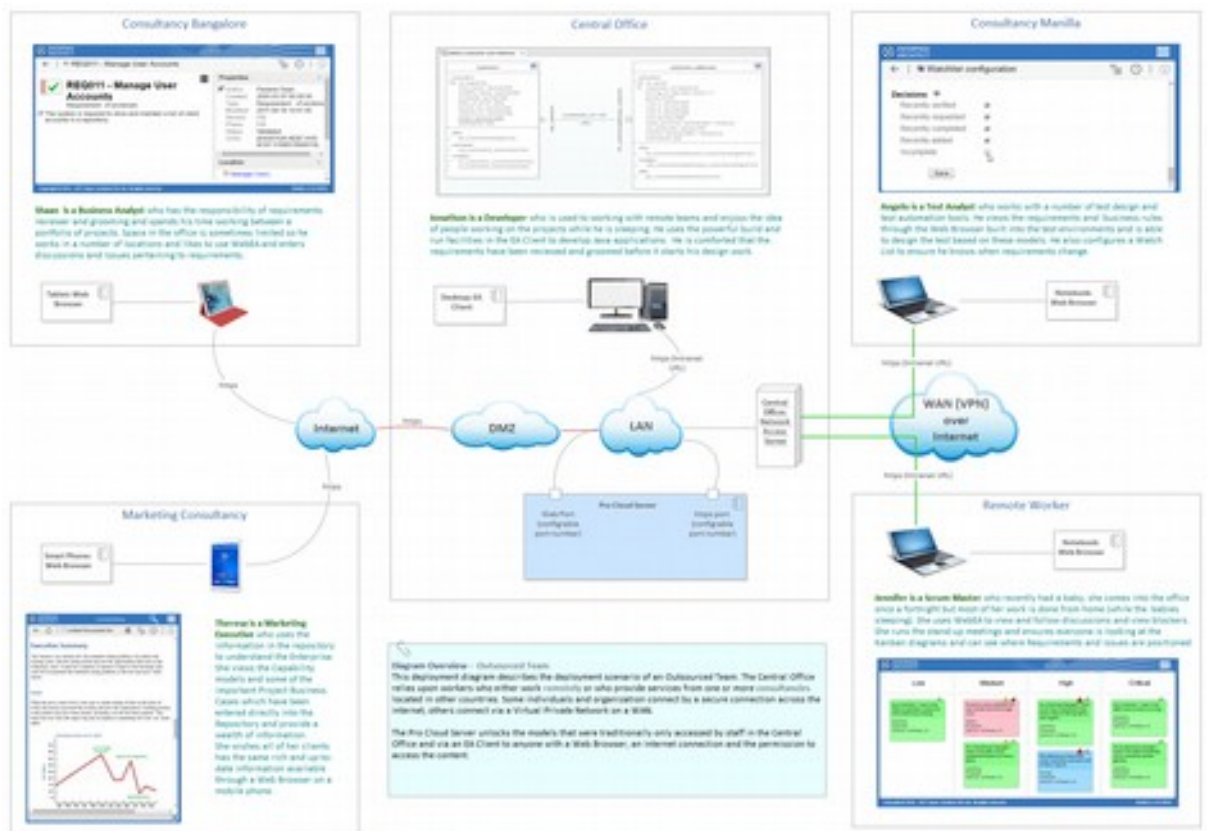
This deployment diagram describes the deployment scenario of an Outsourced Team. The Central Office relies upon workers who either work remotely or who provide services from one or more consultancies located in other countries. Some individuals and organizations connect by a secure connection across the Internet; others connect via a Virtual Private Network on a WAN.

Meet one of the Team

Jennifer is a Scrum Master who recently had a baby, she comes into the office once a fortnight but most of her work is done from home (while the baby is sleeping). She uses WebEA to view and follow discussions and view blockers. She runs the stand-up meetings remotely from her *kitchen* using her *tablet* and ensures everyone is looking at the Kanban diagrams and can see where Requirements and Issues are positioned.

She jokes that she left work for a couple of months and with the Pro Cloud Server everything is turned on its head.

Explore the diagram to see how the people collaborate!



Outsourced Team Pro Cloud Server Deployment Scenario -Central Office Frankfurt.

The Pro Cloud Server unlocks the models that were traditionally only accessed by staff in the Central Office and via an EA Client to anyone with a Web Browser, an Internet connection and the permission to access the content.

Consulting Office

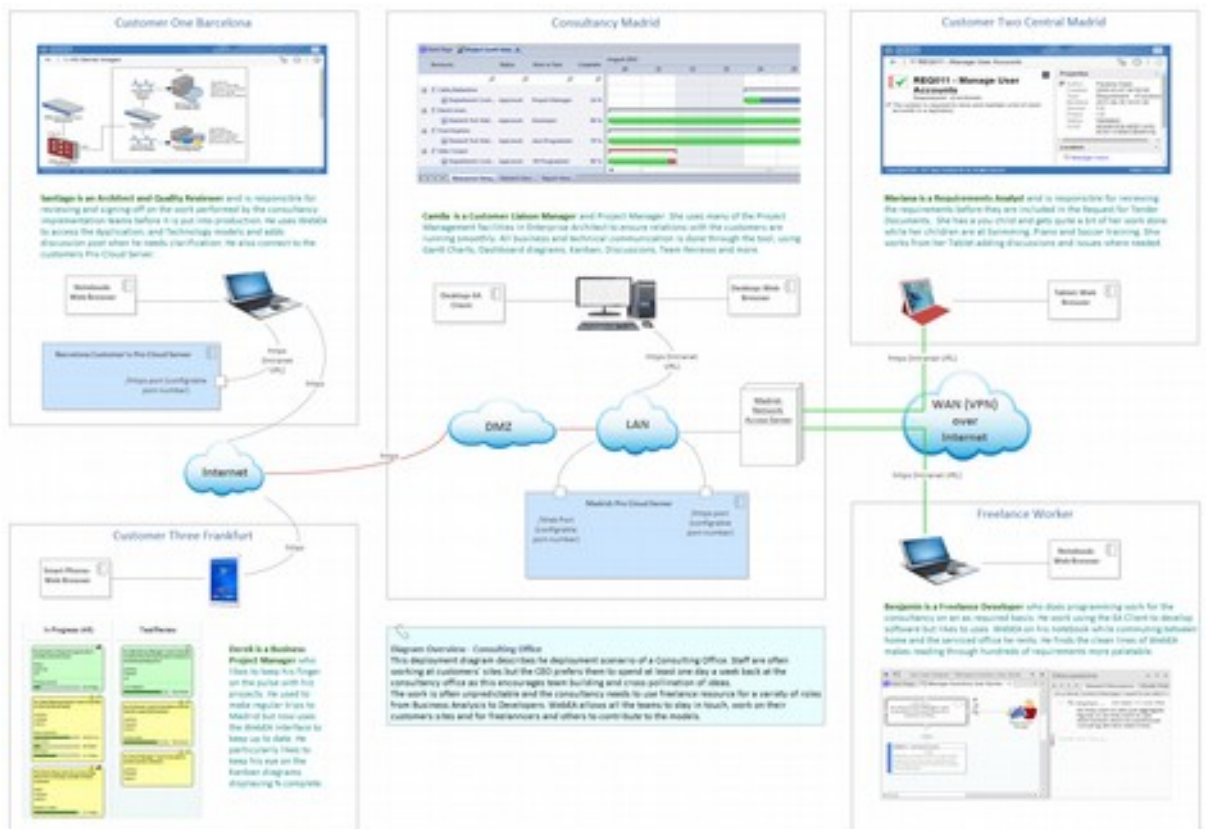
This deployment diagram describes the deployment scenario of a Consulting Office. Staff are often working at customers' sites but the CEO prefers them to spend at least one day a week back at the consultancy office as this encourages team building and cross pollination of ideas.

Meet one of the Team

Santiago is an Architect and Quality Reviewer and is responsible for reviewing and signing-off on the work performed by the consultancy implementation teams before it is put into production. He uses WebEA on his *notebook* to access the Application, and Technology models and adds discussion posts when he needs clarification. He also connects to the customer's Pro Cloud Server.

Santiago often also connects to the consultancy Pro Cloud Server on his phone to view examples that help him at the customer's site.

Explore the diagram to see how the people collaborate!



Deployment diagram showing a consulting office and their customers and freelancers.

The work is often unpredictable and the consultancy needs to use freelance resource for a variety of roles from Business Analysis to Developers. WebEA allows all the teams to stay in touch, work on their customers' sites and for freelancers and others to contribute to the models.

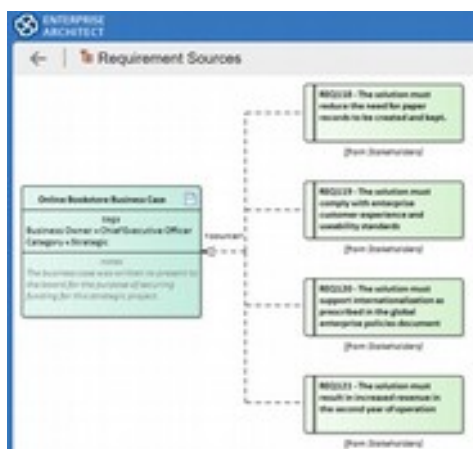
What you can do

The Pro Cloud Server is your gateway to a whole new world of possibilities for existing users and new users who will delight in the User Experience and suddenly have a wealth of information at their fingertips.

- **View Information** - in multiple repositories including elements and diagrams,
- **Browse the Repository** - using a compelling icon driven interface,
- **Search for Items** - including diagrams, elements, packages and discussions,
- **Update Information** - including element and diagram notes,
- **Discuss the Models** - with any number of business or technical users,
- **Keep Watch** - on a user-defined set of elements using a Watch List,
- **Review Models** - including diagrams, elements and packages,
- **Allocate Resources** - to any project tasks and elements,
- **Add Elements** - including Requirements, Tests, Changes, Issues, Packages and more.

View Information

A repository is an important corporate asset and contains vital information that both describes an enterprise, organization or project and provides direction. The information it contains can be used by a variety of roles from senior executives down to low level software engineers.



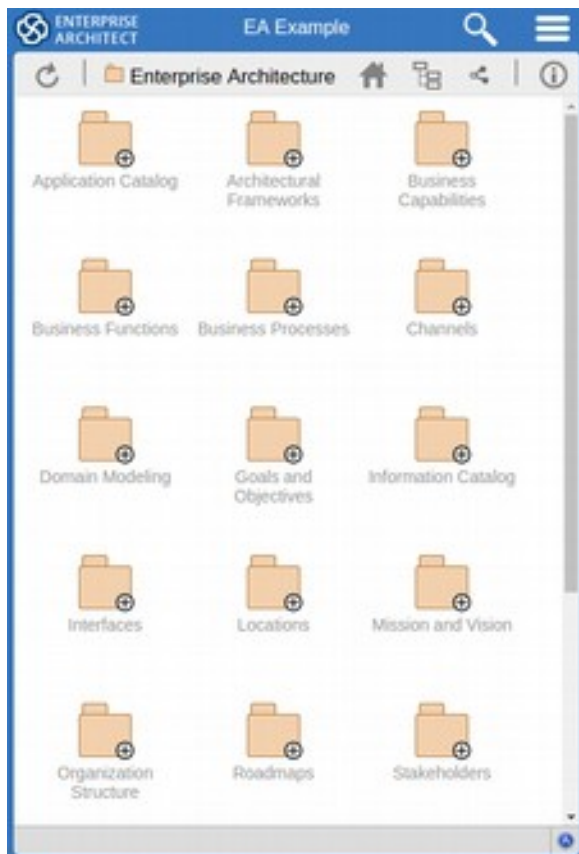
Therese is a Graduate Analyst and has been on a training program *moving from team to team* and is keen to learn as much as possible about the organization. She has been using WebEA using her *tablet* to view information about projects that she has been exposed to and typically starts by reading the Business Case, which is conveniently stored in the repository and then looks at the business requirements.

The diagrams are the thing she likes best as she can scan them quickly and drill down onto any element to get more detail. She is preparing for a meeting to discuss the policies and business rules and quickly views the business diagrams for one of her projects *while waiting for the elevator*.

She meets a university friend at lunch time and can't stop talking about how easy her induction has been because of WebEA.

Browse the Repository

WebEA provides a **simple and elegant graphical interface** for browsing through any number of repositories. The packages, elements and diagrams are represented as icons and a simple back button provides a way to back-track. There is a history icon that allows you to view recently viewed pages. The diagrams also provide an alternate way of browsing clicking elements that will either open up the properties for the element or the child elements.



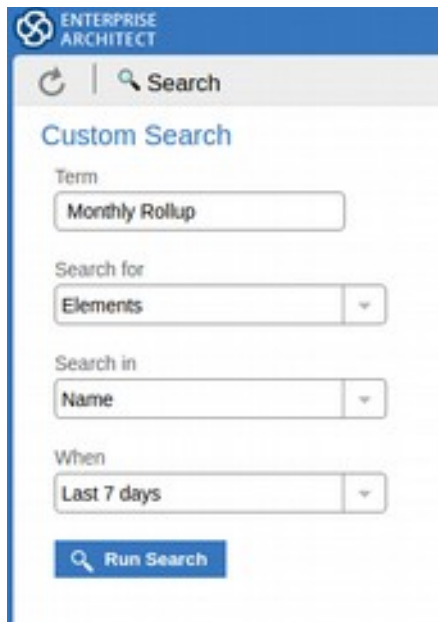
Richard is a Senior Executive whose time is mostly taken up in meetings. He typically has little time to prepare between meetings and has been delighted with WebEA as it provides a way for him to **quickly get an idea of the projects that are being discussed in meetings.**

Before the *monthly strategy update* he opens WebEA on his *tablet* and browses to the strategic alignment sections of two import projects. He notices a couple of things that need to be adjusted given the announcements made by one of the organizations major competitors.

He thinks to himself how technology has finally becoming simple and intuitive and wonders how he ever coped without web access to the repositories.

Search for Items

There is a **simple and intuitive search facility** available from the menu button. This allows a user to search for diagrams, elements, packages and discussions. A search item can be entered and the location can be chosen. This ensures all repository elements are at your fingertips, making it easier to manage projects.

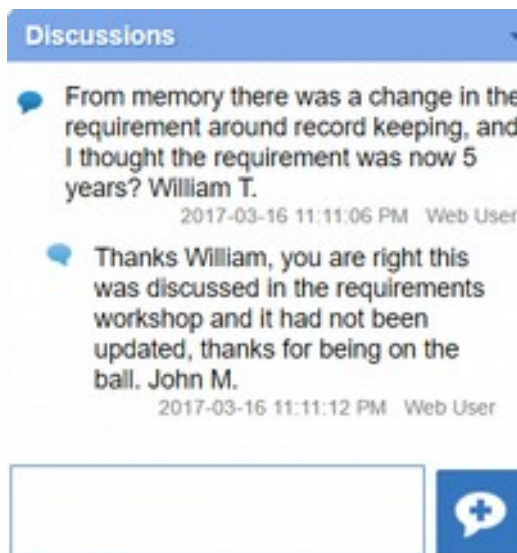


Tania is a Customer who has been asked by her line manager to check up on whether a monthly rollup feature will be included in the next build. Tania logs onto WebEA on her *smart phone* and enters the name of the feature and **searches by name**. The interface returns the feature in a list and she drills down to see its priority. She decides to check it on the project Kanban diagram for the next release and decides to perform a **search by diagram** name. WebEA returns the diagram and she can see that it is in the in-development lane on the diagram and 95% complete.

She sends a quick email with a link to WebEA and suggests that her manager could easily check herself next time!

Discuss the Models

Creating business and software centric systems is a collaborative endeavor and WebEA allows users to **post and reply to discussion items** for model elements and diagrams. This powerful feature means that models can evolve with the input from many users and provides a natural feedback mechanism that is both simple and effective.



William is a business area manager who is passionate about ensuring that his team has the right tools for their work in processing insurance claims. While waiting at the *gate lounge* he logs onto WebEA on his *hybrid laptop* to look at the requirements for the new claims tool and notices a requirement that he thinks is not correct. He **drills down to the element and posts a discussion** item querying the requirement.

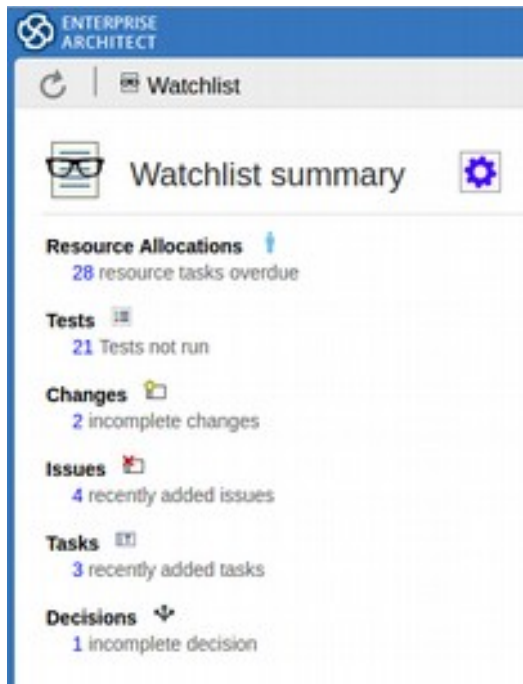
When he arrives at his destination and the plane is taxiing to the gate he checks WebEA and sees the development lead, named John, has corrected the requirement and posted a reply.

He attends his meeting feeling like he is still

connected to the team back at head office.

Keep Watch

A repository is continually changing as new information is entered and existing information is updated or refined. WebEA has a useful and **user configurable feature** called a **Watch List** which conveniently lists important things that are changing in the repository.



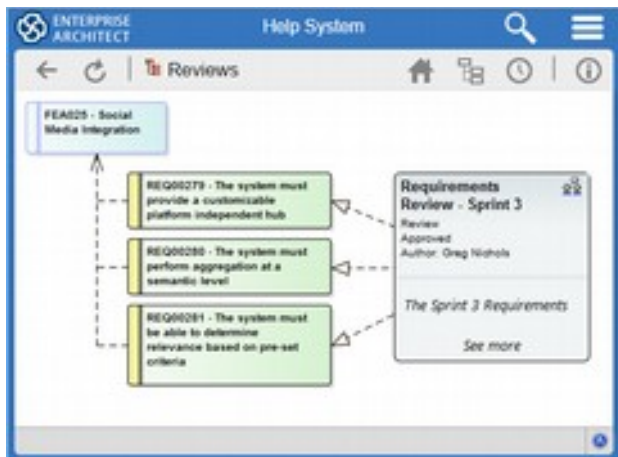
Juan is a Scrum Master and prides himself on being close to the team and helping them *avoid any blockers or obstacles* and ensuring that a sprint progresses as smoothly as possible. He keeps WebEA open on his *smart phone* while running to meetings.

He **uses the Watch List feature like a doctor uses an ECG -as the heart-beat of his project**. He arrives at a meeting early and takes the time to view the Watch List for one of his projects. He notices that there are some overdue Resource Allocation Tasks and drills in to have a look what could be happening. He also notices a new discussion about a patch that hadn't been applied to the development environment. He posts a reply and the problem is fixed in minutes.

Juan had one less thing to worry about and thought about how much the customer would benefit from the new features they were delivering in this sprint.

Review Models

The Pro Cloud Server has a flexible and easy to use facility allowing models, elements and diagrams to be reviewed. This facility forms part of the collaboration features of WebEA which allow model authors to create models and have them reviewed by business and technical users equipped with nothing more than a smart phone, tablet or notebook equipped with a Web Browser. This Review feature could be used informally or as a milestone sign-off procedure.

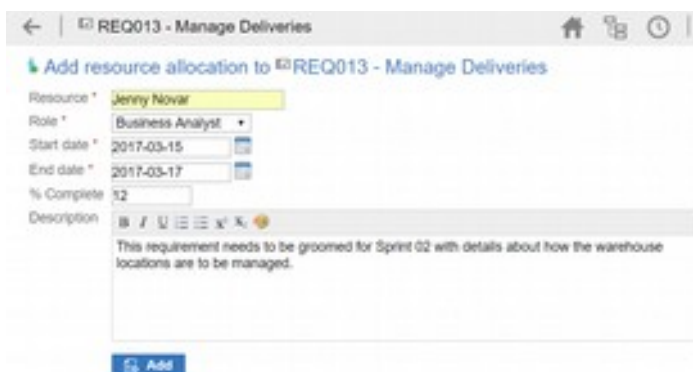


Daniel is a Solution Architect who spends most of his time working on Solutions to complex business and technical problems. He understands the value of getting feedback from both the business and his technical colleagues. Once his architectures get to the draft stage he likes to create a review and get feedback particularly from the Business who enter discussion posts and raise issues using nothing more than a web browser on their smart tablets, notebook and desktops.

He remarks how quickly he gets the review information allowing him to proceed with his design and architecture..

Allocate Resources

Enterprise Architect is a collaborative platform and has a number of sophisticated features for ensuring that a project's tasks are managed collaboratively. There are Gantt charts which can be viewed in conjunction with Kanban diagrams and resource allocation features. Resource allocations can be conveniently created and also viewed in WebEA along with Kanban Diagrams.



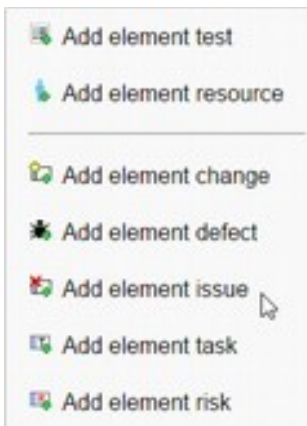
She considered herself lucky to have access to the operations manager at the customer's site who knew the business inside-out.

Jenny is a Business Analyst who spends most of her time on the customer's site. She attends morning stand-up meetings remotely using her tablet. After learning the requirements were still not at a sufficient level of detail for the next sprint she opened WebEA and allocated herself as a resource to groom them for the next sprint. She would take each requirement and add additional requirements that would be detailed enough for the

developers to commerce their design and programming work.

Add Elements and Items

WebEA provides the facility for a user to add elements to the model. The types of elements available will vary in each repository and can be configured by an administrator. This ability to contribute content allows people to add context to models and provide deeper business value.



Jonathon is a Developer who has an eye for seeing problems before they occur. Shireen the Scrum Master has asked him to review the requirements for the next sprint and see if they are sufficiently detailed to commence design and build work. Jonathon has a long train commute back to his country house so takes the opportunity to open WebEA on his large format tablet and navigates to the project's functional requirements. He quickly spots a number of ambiguous requirements and missing details and creates Issues for each one occasionally also adding a discussion item.

He reflects with that out of the way he will be able to spend his day tomorrow on what he really enjoys designing software and mentoring the new graduates.

Usage Scenarios

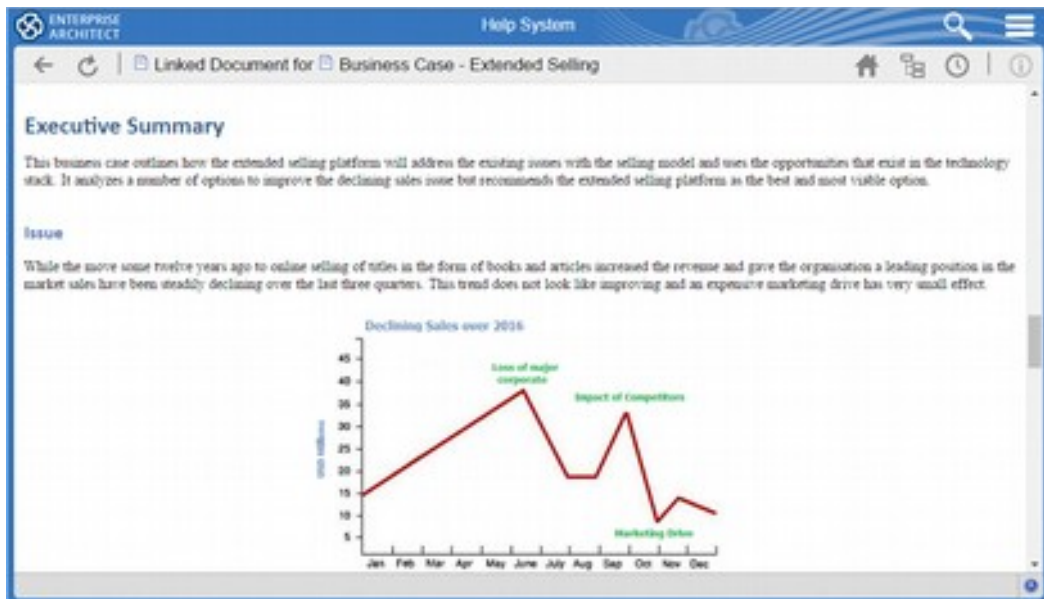
WebEA will revolutionize the way that information is accessed and consumed and will be a welcomed tool for a wide range of roles. The following scenarios will give insight into how the tool could be used by the people in your own organization.



Meet Senior Executive Tom Appleton-Jones

Tom is the director of sales at a large retail chain and has been given some fairly aggressive targets to meet amid ever increasing competition from a variety of sources including online competitors. He does not have a technology background but understands its importance to his bottom line and the way his team works. At the monthly sales

meeting he introduced his team to WebEA and before the meeting was finished **all twenty sales executives were able to access a recent Business Case in the repository.**



Business Case Document

1. Next Morning

Early the next morning Tom was sitting in his car having arrived early to a meeting with a major supplier. He knew the supplier would ask about the status of a new online reporting system that was due to be launched and whether an aggregation feature would be included. He had forgotten to ask the development team, so he quickly logged onto WebEA on his tablet and viewed the Kanban diagram; he saw the feature was in the critical lane for the next build. **Tom walked into the meeting confident that he would at least have one win and thought why not show the supplier the diagram; they provided a number of timely comments, thus giving the development team data to further improve the product.**

2. Commute back to the Office

On his way back to the Office Tom stopped to pick up a pair of shoes that were being repaired and took the time to have a coffee. While waiting for his coffee he received an email from Suzanne the development lead asking whether his team had reviewed the requirements for the new sales platform project- the response was no as they hadn't had time amongst their busy schedule. He sent out a Model Mail email asking everyone to post their comments directly against the requirements in WebEA. **Later in the day he received a call from Suzanne thanking him for getting onto it so quickly.**

3. Watching his son's Soccer Training

The afternoon was spent in meetings but he managed to leave the office early enough to pick up his son from soccer training and while waiting received a phone call from Roger the CEO who wanted to know whether he agreed with Information Technology's interpretation of the

strategic goals. Tom had to confess that he had not had time to review them but quickly turned on his *tablet* and viewed his watch list looking at a diagram showing the relationship between the business and information technology goals. He was able to have a meaningful discussion with Roger and promised he would post some discussion points and add some decision elements before the morning. *He usually did a little work after dinner when the kids were in bed and he could finish it using WebEA from the couch while watching his favorite virtual reality program.*



-Meet Project Manager - Rebekah Hazlemon

Rebekah is a young technical project manager who works for an organization that produces flavors for the food and beverage industry. She is a great communicator and is always happy to use technology when it can help her in her busy day. She typically manages as many as six or seven projects at a time and can be seen *rushing between meeting rooms* or sitting at the *café in the downstairs foyer* meeting with customers, consultants and team members. She has recently been given access to WebEA and is starting to see real benefits.

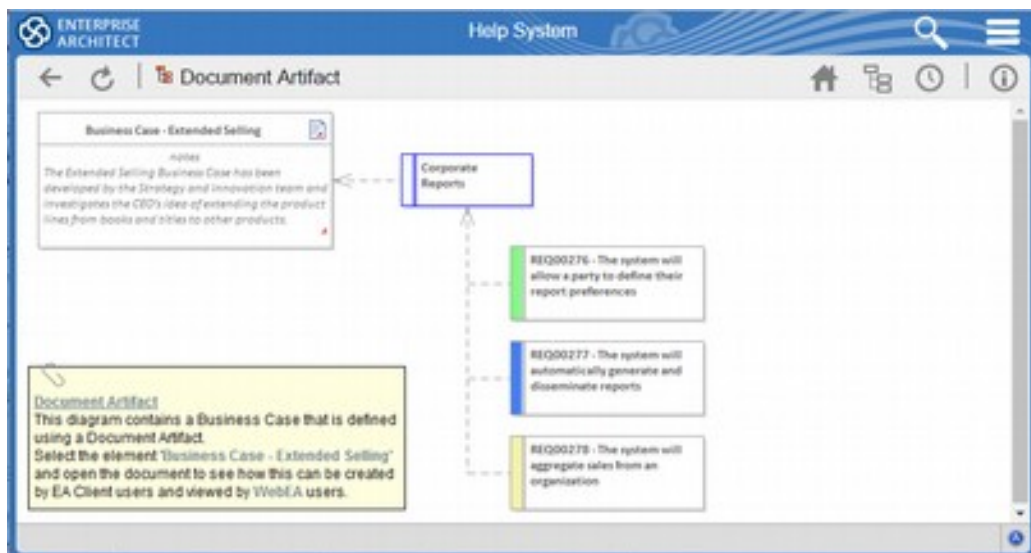


Diagram showing Requirements and Features traced to a Business Case

1. Breakfast Meeting

She attended a *breakfast meeting* with a group of business managers who wanted to see how the ideas they discussed in the recent stakeholder workshops had been documented and how the conflicts

had been resolved. With just her *tablet and the room projector* she was able to walk through the requirements and show how they linked backed to mind-mapping items that were noted during the workshop. *At the end of the meeting Brett who is always the most difficult to please said "Rebekah you are obviously on top of this so let's just get it done!"*

2. Mid-morning Project meeting

At a *mid-morning project meeting* Johnathon the security architect used his *notebook* with WebEA to demonstrate the architecture decisions that had been made around user access and how the security controls were being realized. Rebekah asked whether these solutions were being used across multiple projects and Johnathon was able to open a number of repositories and illustrate the reuse. *Rebekah thought with that under control maybe I can have lunch out with a friend today.*

3. At the airport lounge

After lunch Rebekah was sitting in the *airport lounge* on her way to an interstate meeting with the distribution center. She opened WebEA on her *smart phone* and looked at the Social Media Aggregation project and saw that a customer who had been given access to WebEA had completed a **review of the requirements and had entered discussion posts** which indicated the things they had issues with. *Rebekah quickly added a couple of replies to contentious posts just before the plane took off knowing the implementation team could now start their design work.*



Details of a Feature element showing the notes that describe the element and other properties

4. Back at Home

Finally back at home she got a call from the Theresa the CEO who asked how one of the key projects was progressing and if she needed more resources to complete it. Rebekah opened her *tablet* and looked at the project's **Kanban diagram and viewed the related Gantt chart** and noticed that all the Critical tasks were at least 90% complete and answered coolly. *'Now it's all progressing on schedule and we will have the next product release done by the end of the week'* Rebekah remarked as she turned off her tablet.



Meet Test Designer - Jerry Tomakin-Brown

Jerry works as a test designer for a government agency that manages housing for underprivileged citizens. He has a strong background in software development but went back to university and did a masters degree in Software Testing by thesis. He is now the lead test designer and is confronted daily by the fact that the testers never have enough time to test the software and services adequately. He is consequently trying to design smarter tests with more coverage. Not having access to the requirements and the software architecture and design hinders his ability to do his job. WebEA was announced at a team leaders meeting and Jerry has done some thinking about how he could use it.

1. Morning at the office

Jerry does not have Enterprise Architect installed on his *notebook* but using the Web Browser that is part of his testing platform seamlessly accesses the Repository for the new Property Management System and is able to browse to the design diagrams. He still has some questions about how a number of databases are used and so **posts some discussion items to check with the developers.**

Traditionally he has had to arrange meetings with the developers and so he was delighted when fifteen minutes later he received a response to his posts with detailed explanation and a reference to a diagram that explained everything. *Jerry created a number of glass-box test cases confident that he understood how the application worked.*

2. After Lunch

After lunch Jerry *attended a test review meeting* and listened to one of the testers Juanita complaining that she is never sure that the requirements that they receive in a spreadsheet are the latest ones. She laments that if she had Enterprise Architect installed and was able to attend some training she could access them herself. Jerry who had

just been listening to that point reminded them about WebEA and the fact they could access the requirements with just a Web Browser. Juanita didn't seem convinced so Jerry launched WebEA on his *tablet* and **searched for one of the requirements** – all the requirements properties were visible including status and priority. *It was a 'eureka' moment for Juanita and the other testers.*



Meet Standards Developer - Jurgen Taglia

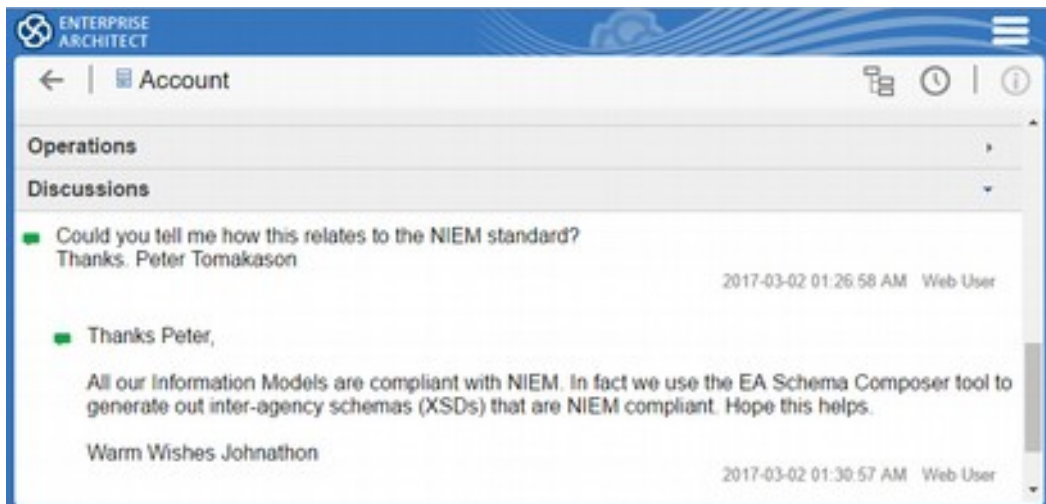
Jurgen is a senior software engineer working for an energy distribution organization and spends at least half of his time working for standards bodies. He is currently working on a standard for energy consumption monitoring devices. He needs to collaborate with the other committee members but also more widely with industry experts and customers who would eventually adopt the standard. Jurgen just received an email from another team member on the other side of the world containing a hyperlink and an access code to WebEA for their repository and was keen to see how they could use it.

1. Morning Cycle Meeting

Jurgen had just finished an early morning cycling training session for an upcoming triathlon and was sitting next to his bike in a park when he joined a conference call and opened WebEA to follow the discussion – it was his first use of WebEA. The conversation was primarily to review some of the xml models that represented the final output of the standard. Jurgen quickly flicked between high level and detailed diagrams and was able to contribute to the conversation while taking much needed drinks of water from his bike drink bottle. *Back on his bike he rode home with a new enthusiasm knowing the standard was moving forward.*

2. Sitting on the Train

Breakfast and showered Jurgen was on his way to work on the 7:52 am morning train when he looked at WebEA and saw that another standard that he was working on for Financial Aggregation had been updated with discussions by some of the leading industry experts. They didn't use Enterprise Architect but had been given access to the repository using WebEA and in just two days had added discussions and written conclusions to a number of pressing concerns. *Jurgen had a perceptible smile on his face as he left the train knowing that this would normally have taken months to resolve. He could now finish that module of the standard knowing that it had been ratified by the best in the industry.*



Discussion post and reply used to collaborate about a model element.

3. Kanban at his Favorite Cafe

He stopped for a coffee and pastry at his favorite café. Still smiling, he launched WebEA on his notebook and opened the repository viewing the Project Kanban diagram he moved a number of tasks to critical so that work could begin on them. He arrived at work just before 9:00am and met the project manager in the lift who had been watching the tasks and asked him how they had arrived at a decision so quickly. *He explained and the project manager said 'Now that will give me something positive to talk about in the program management meeting.'*

Meet Support Analyst Lead - Jennifer Greensborough

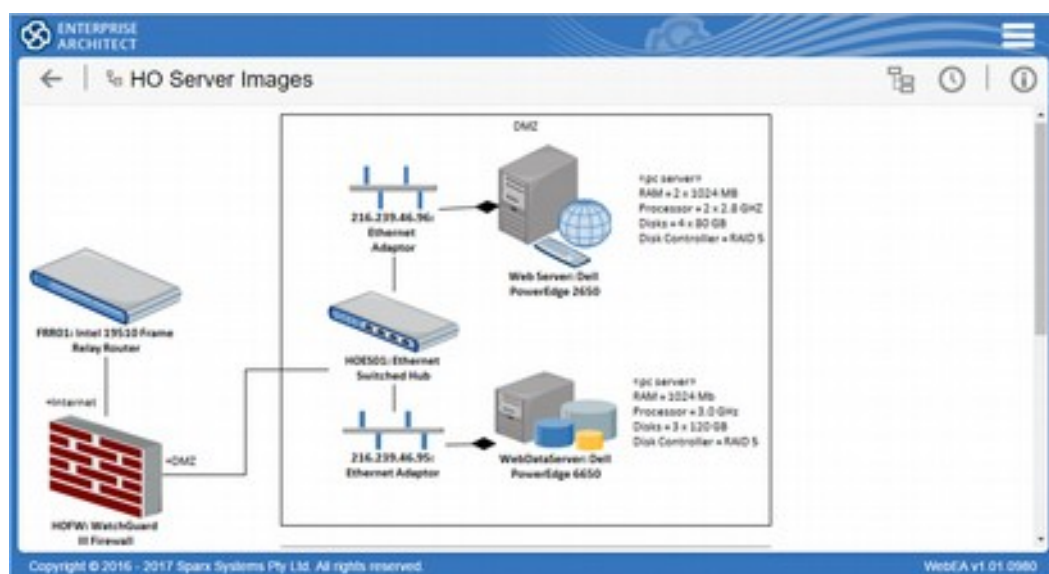
Jennifer is a support analyst at a large software development organization that provides services to the sporting sector. She is very thorough and prides herself on being able to manage a team of engineers who can diagnose a fault quickly and get production systems back up to speed. The Software developers had long been promising they would provide access to their models to assist her team in fault diagnosis so she was delighted to hear about WebEA that would allow team members including herself to access information about the design and architecture in a convenient Web based model.



1. Support call at 4:00 am

Francoise one of the lead engineers reluctantly called her at 4:00 am because one of the score streaming servers was failing to generate test scores fifteen minutes before a big tennis tournament on the other side of the world. Francoise wanted Jennifer's opinion about possible causes, *still in bed* she turned on her *tablet* and

launched the web browser and WebEA, navigated to the deployment diagram and drilled down into sections of the diagram. Francoise had to place Jennifer on hold to take a call from the tournament manager. **She quickly added discussions to the model** indicating the most likely cause to be that a configuration database had not been bought up properly after a last minute security service patch. Francoise accessing the repository through the Enterprise Architect client saw her discussion and immediately tested her theory. *The first match of the tournament started and 500 million people around the world saw the score 15-0 on their screens including Jennifer who with fingers crossed had decided to stay up and watch the tennis.*



Deployment diagram showing the elements inside the DMZ.

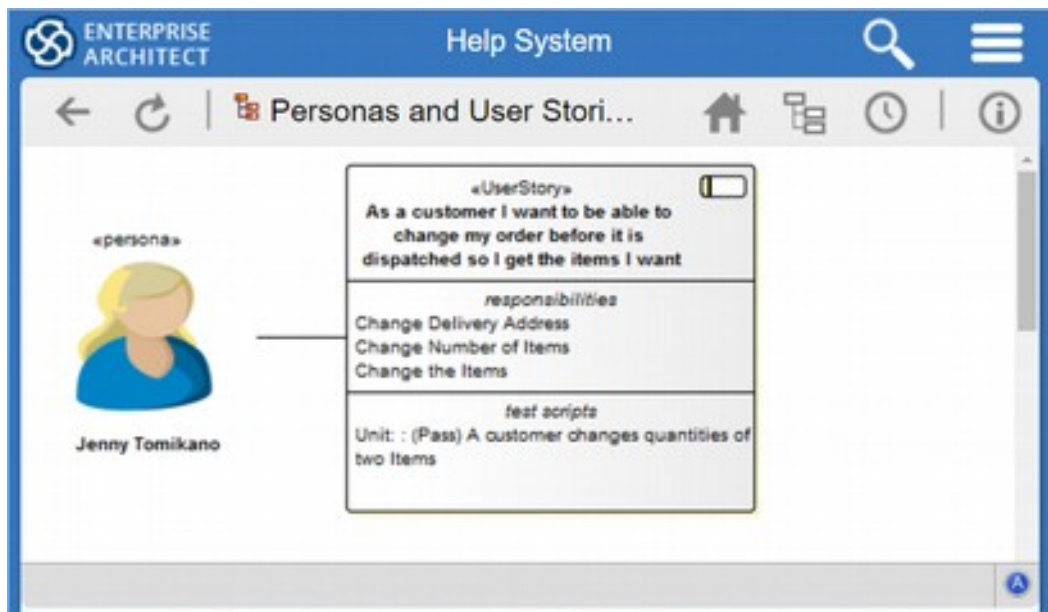
2. After morning tea

Jennifer arrived at the office a little after morning tea and remembered that she had a meeting with Tom the Manager of Outages and went straight to his office. 'What would be great is if your team could determine who was going to be affected if a Server went down and let them know the impact' he said. Jennifer reflected on WebEA and realized that if the correct diagram were drawn anyone in her team could quickly see the impacts of an environment or server outage. The on-call staff could access WebEA on their smart phones from wherever they were - out at dinner or at home with the family and determine the impact. They could then make the decision as to whether they needed to log into the core systems remotely or come into the office. *Jennifer was starting to feel quite empowered and realized the importance of having real-time information at her fingertips.*



Meet Implementation Team Lead - Hiroshi Miyokana

Hiro as he prefers to be called works for a boutique App Development Company and is focused on taking projects from their specification and architecture phase through to implementation. He knows that nothing is more important than a **well-informed team who can collaborate well and stay focused** on getting the result. They work iteratively in what he likes to call an Agilesque method. They have been using Enterprise Architect for some time but have had to work around elements of the business and consultants who work remotely not having the tool. He was delighted to hear from procurement that WebEA had gone ahead and the service had been set up.



Custom diagram showing a Persona and a User Story with Responsibilities and Test Cases

1. Commuting to a customer's office on the train

Megan who works with Hiro was on the train commuting to a meeting with a customer and decided to view one of their new Apps for a sportswear company running in a sandpit. She noticed a number of embarrassing spelling mistakes on the interface and immediately launched WebEA on her smart phone and **created an Issue against the user interface elements**. She posted a discussion item that they should be moved to critical ensuring they would be in the next

build. *By the time she got to her meeting* a new build was running in the sandpit and the mistakes had been corrected. *She received a text message from Hiro apologizing for his spelling but saying English was a wacky language.*

2. No more meetings for Hiro

Hiro had traditionally run workshops to resolve issues including missing detail and ambiguities with requirements but decided to use WebEA to allow customers the opportunity to add clarifications in their own time. He didn't really enjoy the meetings anyway as a number of key people always seemed to be missing meaning they couldn't reach a consensus. He sent the customers an email with a URL and an Access Code and got a number of developers to post questions in requirements that needed clarification. By mid-afternoon he noticed on his *hybrid laptop* that all the requirements but one had moved into the in-development lane of the project Kanban board and were being worked on. *Hiro breathed a sigh of relief and reflected on how much he had achieved without the need to facilitate a meeting in another building.*



Meet Scrum Mater - Chuck Ottawan

Chuck is a Scrum Master working for a government transport agency focused on revolutionizing transport in the major cities. He has been working on a number of projects to synchronize different transport means to create the largest possible number of connections between trains, trams, buses and ferries. He is committed to the agile way of working but also knows the benefit of sound business analysis and architecture.

The team uses Enterprise Architect to complete analysis and architecture work but had typically used a wiki and email to communicate with the transport divisions and other project teams that were distributed and used a different tool set. They started using WebEA as a way of centralizing all of their communication and collaboration opening up communication with people accessing the repository on *tablets, smart phones, notebooks and desktops.*

1. Morning standup meetings

Chuck had sent out an email asking a number of remote team members to use WebEA to view the repository during the morning stand-up meetings. Chuck always projected a couple of key diagrams in Enterprise Architect showing the sprint from business requirements through to the technology stack. He also projected the Kanban Board in Enterprise Architect to talk through blockers and priorities and now the remote team members could also look at the same diagram. Sarah

would record the outcomes and decisions made during the meetings directly in Enterprise Architect and now these would be available to all team members. *Chuck remarked after the meetings - 'It's as if those people were actually in the room with us.'*



Kanban diagram showing user stories, changes and defects.

2. Timely customer feedback

The team had traditionally used a Wiki for getting feedback from their customers but Terry who was a graduate developer had the idea of allowing the customers to comment and raise issues by giving them access to the repositories and the User Interface models which were a model of the built App but contained all the details of the screens. The result was astonishing **they quickly got feedback** for the product created in the last spring and the Discussions and Issues were linked directly to the controls in the Web Interface models and the customers had done this using WebEA on their notebooks, tablets and smart phones. Chuck presented the results to a group of the developers who remarked how easy it was to correct the errors and change the design of the interface. *Chuck thanked Terry for the idea and started thinking about other projects that would benefit from the same idea.*