

# Enterprise Architect 13 Beta

Advanced, enterprise wide, visual modeling platform

New elegant, functionally rich user interface  
A refreshing way to work with Enterprise Architect



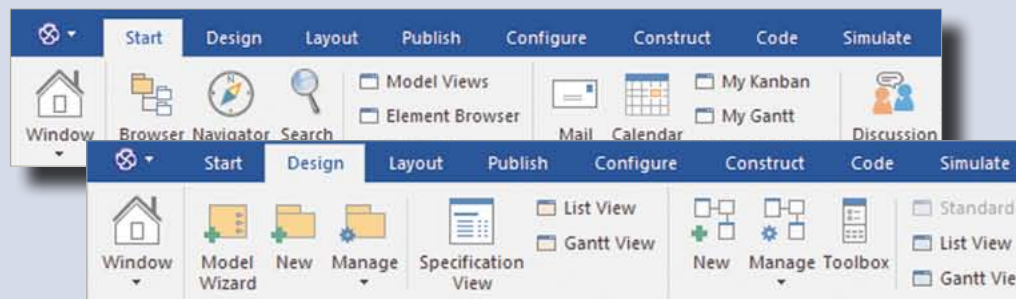
**ENTERPRISE  
ARCHITECT**

[www.sparxsystems.com](http://www.sparxsystems.com)

**Download Enterprise Architect 13 Beta from: [www.sparxsystems.com/ea13](http://www.sparxsystems.com/ea13)**

*Read on...*

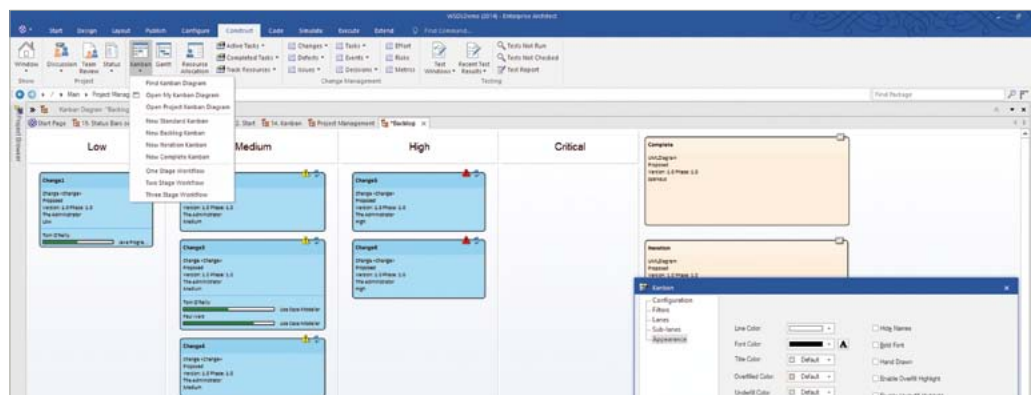
# Ribbon Interface



*Access the tools you need quickly and easily with helpful categories*

This is a completely new way to work with Enterprise Architect. In a functionally rich platform such as Enterprise Architect 13, the Ribbon interface provides immediate access to the functionality for your specific workspace and tasks.

- The interface provides a visual consistency and modern icons for a clean look and feel
- A selection of add-in menus can be added based on the user category of choice
- Integrated ribbon categories are available for Linked Document and Specification Manager



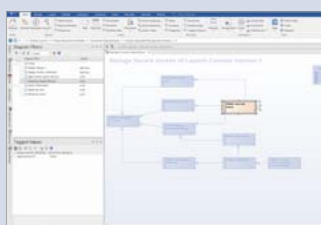
## Project Management using Kanban

New helpers, dialogs, model patterns and more for Kanbans. Improved user interface for diagram definition with Kanban configuration moved from swimlanes to own dialogue

- Populate Kanban diagrams automatically
- Sublane management makes it easier to use a consistent set of sublanes enabling single modification for sublane groups
- New Kanban drawing style added
- Dialogue settings available on categorized dialogue pages
- Kanban properties dialogue available from swimlane background with double click

## Diagram Filtering

- Support for Element Tagged Values
- Specify Name and Value of element tags to enable matching specified filters
- Grouping of Diagram filters and easy toggling of child filters



## SysML Simulation with OpenModelica

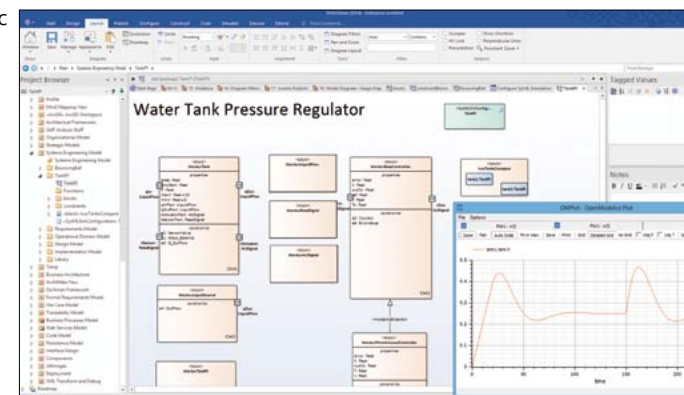
Simulate and graph SysML parametric models via the OpenModelica integration

Equation based modeling of complex interacting engineered systems within the automotive, aerospace, robotics and power plant industries. e.g., systems containing mechanical, electrical, electronic, hydraulic, thermal, control, electric power or process-oriented sub-components.

Supports analysis of changing designs and usage scenarios.

OpenModelica speeds up development by evaluating and improving variants earlier in the design process.

Use Enterprise Architect SysML models to simulate the entire product behavior, in the whole operating range.



- Simulate and graph SysML parametric models
- Describe and annotate existing SysML models
- Generate OpenModelica code from your SysML blocks and constraint blocks and map to reusable code

## New MDG for AML

Archetype Modeling Language  
Version 1.0 - Beta1

*A clear, consistent means of designing clinical models using UML*

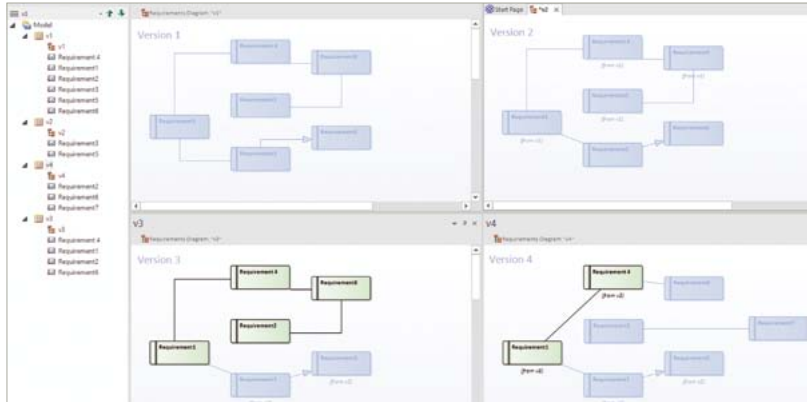
Implements the profile defined in the OMG Archetype Modeling Language beta 1

- Implements the profile defined in the OMG AML beta 1 Specification
- Allows creation of Clinical Information Modeling Initiative (CIMI) artifacts for a shared

open library of detailed clinical models

- Concepts that can be modeled using archetypes include weight measurement, blood pressure, microbiology results, discharge referral, prescription, or diagnosis.

# Time Aware Models



*Keep multiple versions of the one model so you can see how a model/diagram changes over time*

Enterprise Architect 13 allows you to easily compare As-Is and To-Be models, being able to analyze a diagram to see exactly what changes occur at every iteration. Simply select the structure or

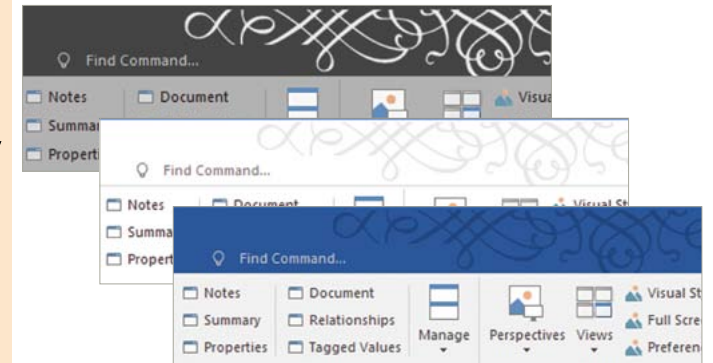
package you would like to observe and use the Context Menu to 'Clone Structure as New Version'. Now you can make changes to subsequent iterations without altering the underlying structure

of the As-Is diagram. This Cloning Approach provides substantial benefits and allows you to take a snapshot in time of model development.

## Improved Linux & Mac Compatibility

First class support, performance and behavior of Enterprise Architect on Linux and Mac OS:

- Easy to use
- Effortless database configuration and connectivity
- Enjoy the same experience regardless of the choice of Operating System (Linux, Mac, Windows)
- Simplified install steps



## Office 2016 Visual Style

*Applied by default for new installs, giving Enterprise Architect a new fresh look and feel*

- Themed command search function, optimized for use with ribbons, yet works equally with traditional menus
- Includes options for changing base and highlight colors used



## Direct Publishing to Joomla

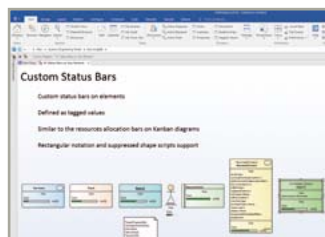
- Version 3.5 for web content

- Publish and synchronize your models directly within Joomla
- Publish a Package directly to the Joomla database via ODBC
  - Writes the pages and menu to allow model navigation
  - Heat and Image Maps allow clickable diagrams

## Custom Progress Bars

Enterprise Architect 13 now allows you to place custom progress bars on any element that supports rectangular notation and suppressed shape scripts.

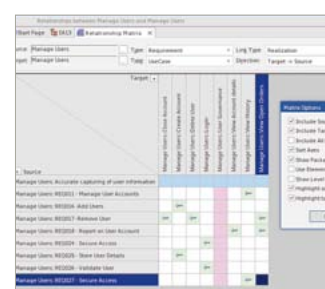
Defined using the Tagged Values, users can create and name their own compartments, show the value of the status bar and other custom text next to the bar graphic, supply a min and max value for the bar (default 0 - 100).



## Relationship Matrix

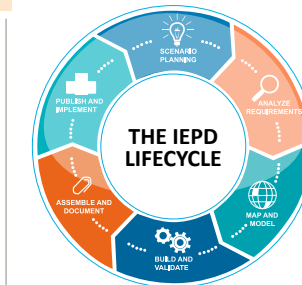
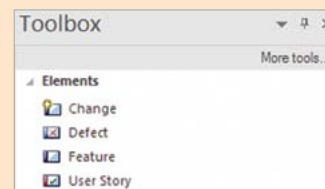
Highlight elements without relationships

- Displays all Row cells in pale BLUE
- Displays all Column cells in pale PINK



## New Kanban Profile

- Element Types include Change, Defect, Feature and User Story
- Diagram Types include Basic, Backlog, Iteration and Complete
- Model Patterns, create a one two or three stage process model available from Ribbon (Construct|Kanban)
- New diagrams and model patterns can be created from Ribbon (Construct|Kanban)



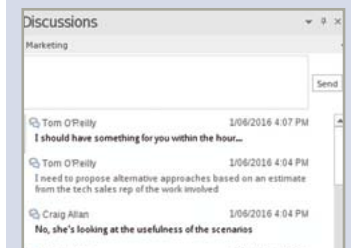
## Improved NIEM

- Augmentation Point generation improved
- Referenced properties now generated from Association-Type elements to Property-Holder types

## Model Chat

Model based instant messaging

- Configurable for teams, send / receive task specific messages via the repository
- Rapid team communication
- Hyperlink to model elements
- Increased team awareness of current information
- Includes notification if Model Chat window is closed



## Major Enhancements

### Extended BPSim

Xpath expression support added.

- Specify expressions without extensions in generated BPSim
- Toggle between Xpath and Java expressions in Simulation properties
- Multiple expressions supported on a single task

### Model Diagram Image Maps

Create and maintain images and image maps for all the diagrams in the model

- HTML style image mapped with element GUIDS for easy use by automation clients
- New automation functions added to access these maps.
- Single and multiple image maps can be saved to specified directory

### Enhanced SysML Features

- SysML Parametric diagram rendering
- Paste As dialogue behavior for SysML blocks
- Property Binding
- SysML 1.4 Element Group note now displays number of attached elements

### Linked Document viewer

In line with the diagram view, the Document view allows you to open, edit and reload Linked Documents and set the default zoom.

Two new searches are available for

- Rapid location of linked documents or just the ones that have been modified recently
- Rapid switching between linked documents by single clicking elements in the project browser, diagrams or search results.

### Improved BPMN

BPMN Pool and Lane improvements:

Dropping a Lane onto a Pool:

- Header area allows converting the pool or adding the lane to the pool
- Main area automatically adds lane to pool

Dropping the Pool onto a Lane

- Converting the Lane or adding a new Pool
- BPEL context menu restored to Project Browser

### Enhanced Code Engineering

C# 6 enhanced support:

- Property initialiser and member functions using expression round tripped
- Parser updated to support conditional access operators and string interpolation
- C# state machine generation style now controlled by C# specific option

Added:

- Java 8, C++11, PHP 5.6, and ADA 2012 support
- ADA code synchronization enhanced
- Object oriented bitfields now roundtripped

Updated:

- C parser, VB.Net parser, XSD generation, WSDL import, Code Editor C++ parsing
- PHP Syntax highlighting on dark theme improved
- Code Template Editor functionality improved

### Enhanced Documentation and Reporting

- HTML Report of relationships improved with new fields available in reports
- Project Browser
- Document Generation - New fields available

### XMI

- Ecore generation links to correct URI for string types
- XMI round trip updated to map NIEM profile to values expected by other tools
- XMI import:
- Now preserves bindings between ConnectionpointReference and Entrypoint and Exitpoint
- Import from other tools updated for attribute multiplicity search in additional location

### API

- New Properties and Methods
- Broadcast Changes:
- EA\_OnPreNewElement now provides FQStereotype using info parameter
  - EA\_GetRibbonCategory – New broadcast allowing an add-in to place its menu in a specific category of the new ribbon interface

### Back End Repository Updates

Opening of repositories now informs the user of the following:

- Unsupported driver\Incorrect password\Unknown user\Lack of permissions

Reference Data Import Improvements:

- Import dialogue

Updating of RTF and HTML templates into cloud repositories

### Cloud Services Improved

- Maximum length of SQL update statements increased when connecting to cloud server supporting Internet Protocol Version 6 (IPv6)
- Performance of large requests i.e. Saving linked documents

### Improved Diagramming

- Default zoom level no longer saved with current user zoom level
- Dropped elements on a Diagram reference will now allow moving or copying the element to the target diagrams
- Element type icons can now optionally be suppressed
- Display of priority on Requirement based elements now optional

### New Project Browser Menu

New drop down menu for the Project Browser "Model Overview":

Access:

- Open Project, New Model from Pattern
- New Package, Diagram and Element
- Find in Project Browser
- Code and Documentation Generation

Download Enterprise Architect 13 from: [www.sparxsystems.com/ea13](http://www.sparxsystems.com/ea13)