



Diagram Filters

This Quick Start Guide describes how to create Diagram Filters using Enterprise Architect. Diagram Filters allow you to tailor the presentation of diagrams and conduct meaningful comparisons. Dynamic Visual Filtering lets you highlight diagram elements based on selected properties such as Author, Status, Stereotype and Version. Diagram Filters are ideal for comparing 'as-is' and 'to-be' architectures. They can also be used to visualize changes to a model diagram after a given date.



All material © Sparx Systems 2010
<http://www.sparxsystems.com>



Table of Contents

Introduction.....	3
What You Will Learn.....	3
What You Will Gain.....	3
Assumptions.....	3
Creating a Diagram Filter.....	4
Applying Multiple Diagram Filters.....	7
Comparing Project Phases.....	8
Section Review	10



Introduction

Diagram Filters can be used to tailor a diagram and make meaningful comparisons. For example, you may wish to compare different phases of a project. A Diagram Filter within Enterprise Architect will show every element that matches the criteria specified. The Quick Start Guide demonstrates how to create Diagram Filters using the Enterprise Architect Example Model.

What You Will Learn

After reading this document you will learn how to:

- Create and apply a Diagram Filter to highlight parts of a diagram and facilitate comparison.
- Use Diagram Filters to compare the different phases of a given project.

What You Will Gain

This report will allow you to:

- Tailor the presentation of diagrams for different stakeholders.
- Compare 'as-is' and 'to-be' architectures.
- Quickly identify diagram elements and conduct meaningful comparisons.
- Highlight changes to a diagram made by a particular author.
- Hide confidential or irrelevant detail during a presentation without impacting model integrity.

Assumptions

This Quick Start Guide has been written under the following assumptions:

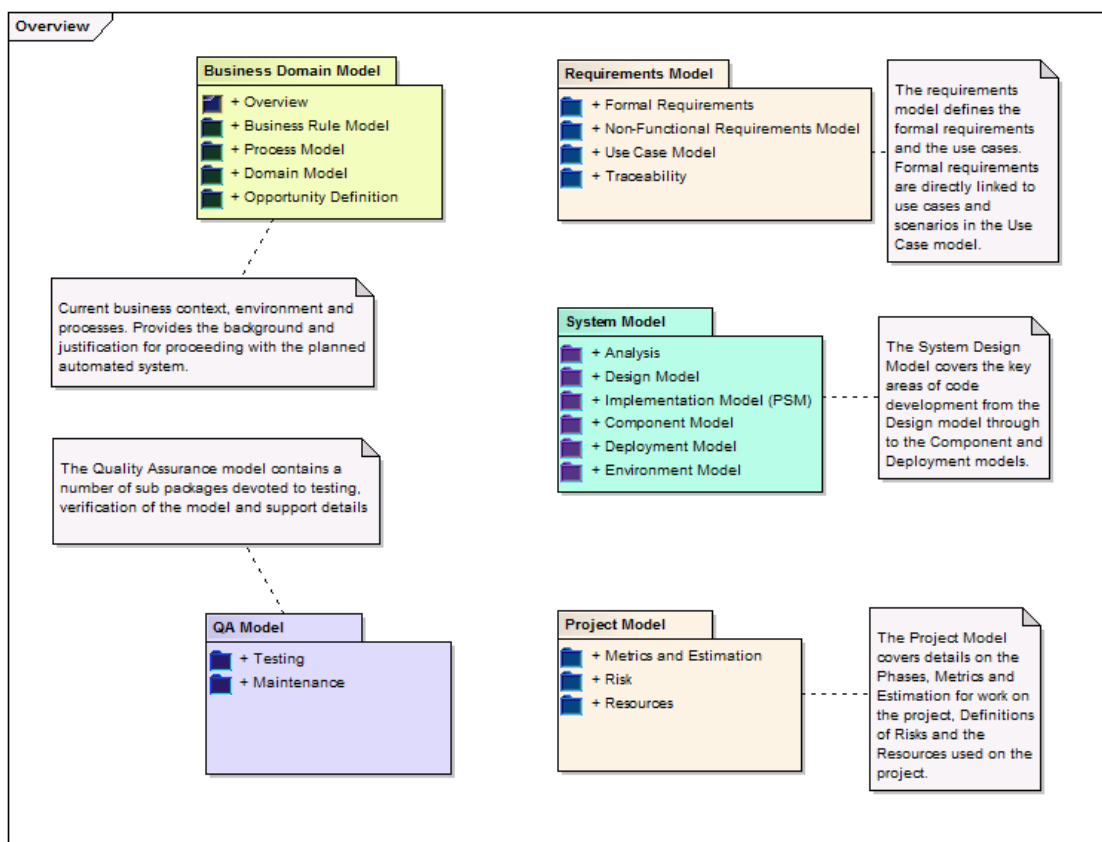
- You have a copy of Enterprise Architect 8 installed and have access to the Enterprise Architect Example model.
- You have a basic understanding of creating diagrams within Enterprise Architect.



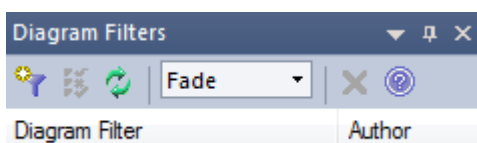
Creating a Diagram Filter

The following filter will be used to highlight parts of the diagram associated with the Business Domain Model.

1. Open the Enterprise Architect Example Model.
2. View the Model Overview Diagram by double-clicking the 'Overview' link on the Welcome Page. An example of the diagram is shown below. We are going to filter this diagram to only display the Business Domain Model.

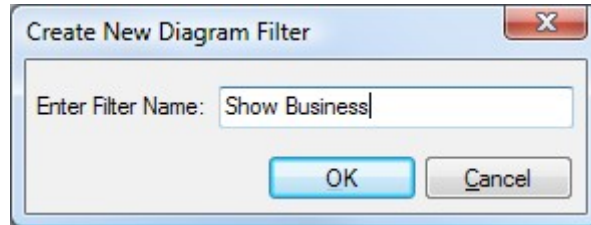


3. Select View | Diagram Filters and select the first icon.

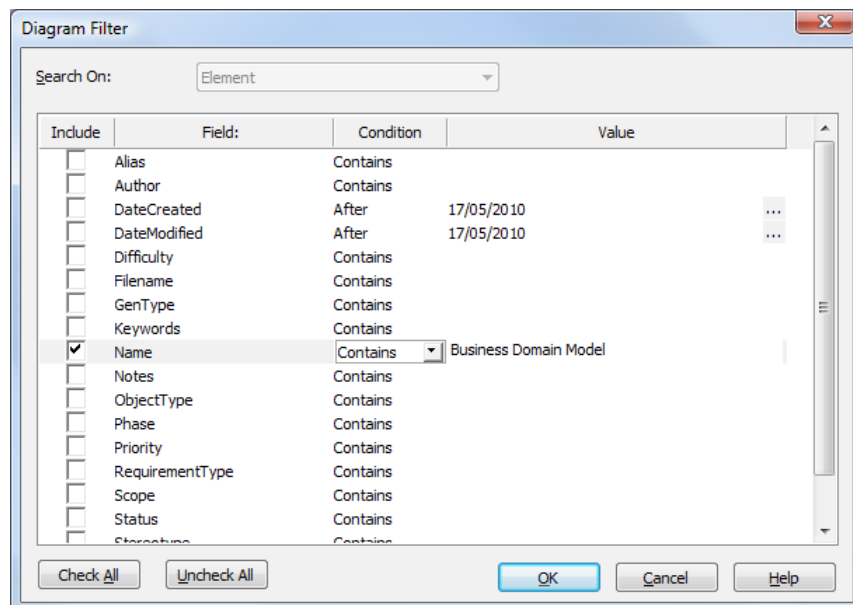




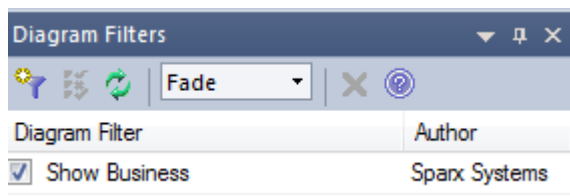
4. Create a new Diagram Filter called “Show Business”.



5. Select the check box to Search on the Name field. This allows you to filter the diagram based on the Name attribute.
6. Select the 'Contains' option from the drop-down list. Set the value equal to Business Domain Model. Click the OK button.



7. Select the 'Fade' option from the drop-down list to completely obscure items not described by the filter. Select the check box for “Show Business” to apply the Filter.



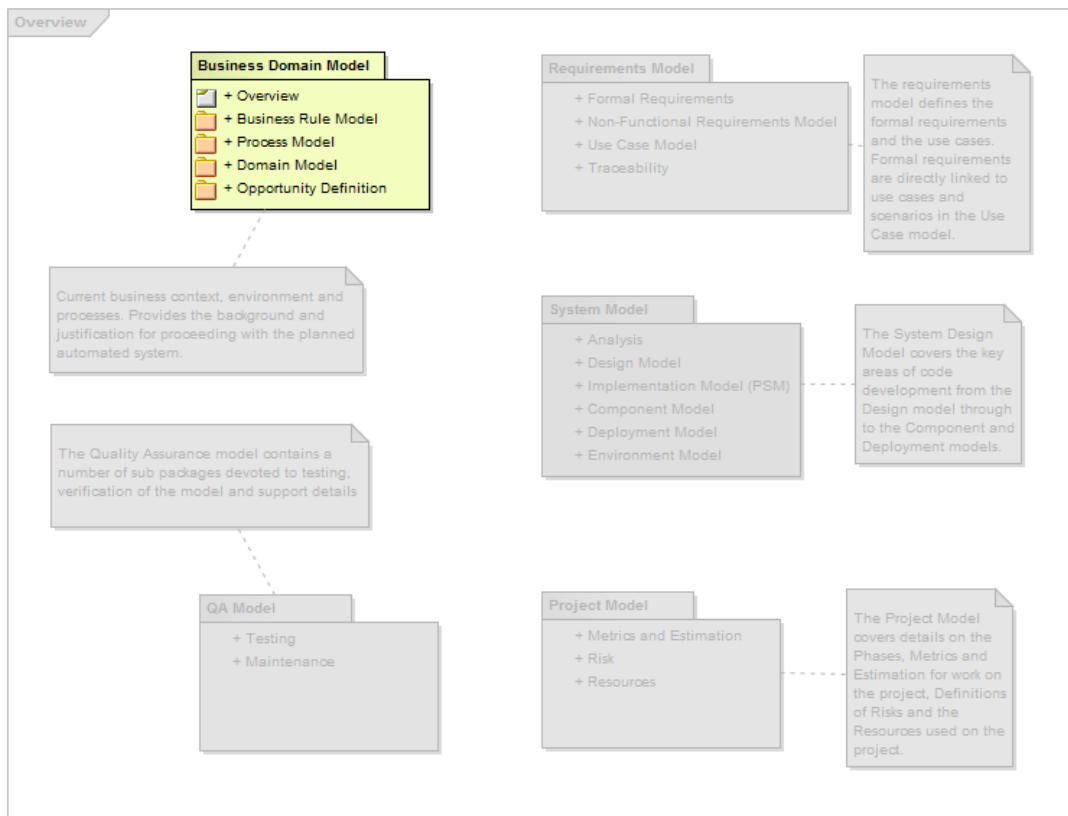


8. The result of applying the filter is shown below. The only element visible on the diagram is the Business Domain Model.



This model provides an example of how the various features in EA and UML 2.0 can be used to model a project from the early stages of business analysis through to final deployment and maintenance.

The model is a UML design for an "Online Book Store". Although it does not represent an exhaustive model, it covers many of the key areas supported by Enterprise Architect.



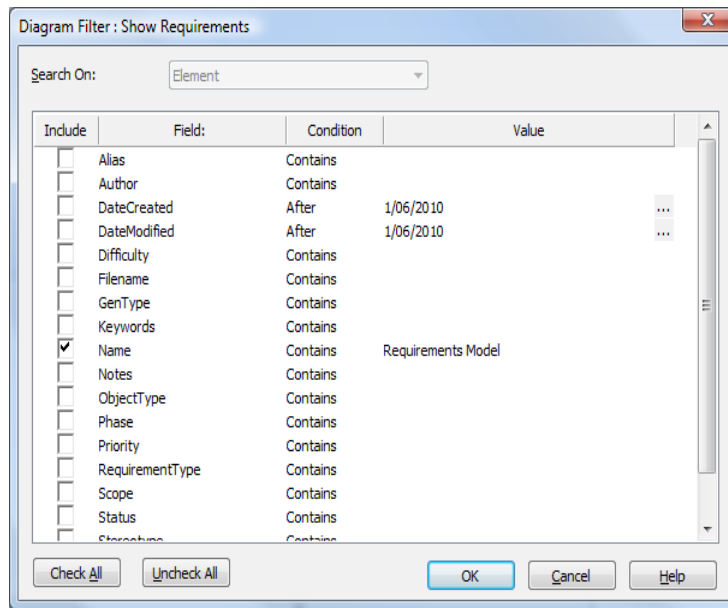
Resources Overview



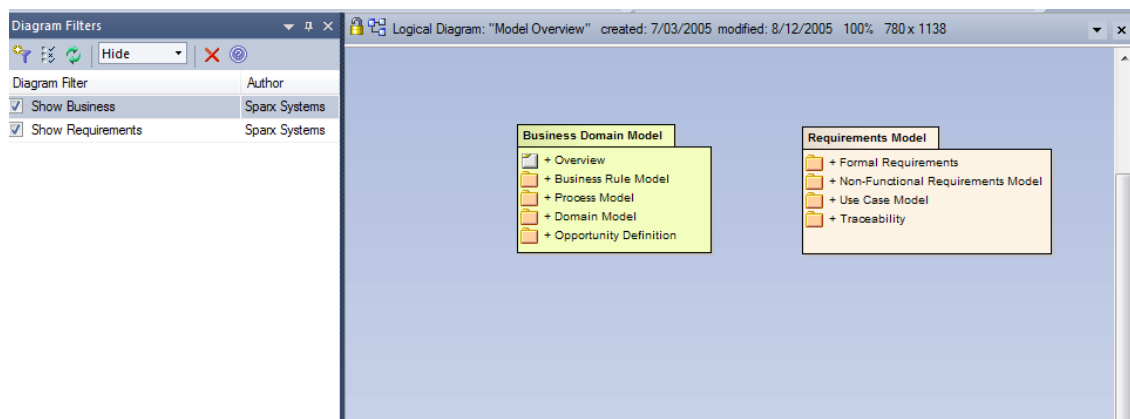
Applying Multiple Diagram Filters

Enterprise Architect allows you to use create more than one diagram filter at a time.

1. Create a new Diagram Filter entitled “Show Requirements”.
2. Select the check box to Search On the Name field. Select the 'Contains' option from the drop-down list. Set the value equal to Requirements Model. Click the OK button.



3. Enable both Diagram Filters and select Hide from the drop-down list. You will observe that both the Business Domain Model and Requirements Model are now visible. All other diagram elements are now obscured allowing you to highlight elements of interest.

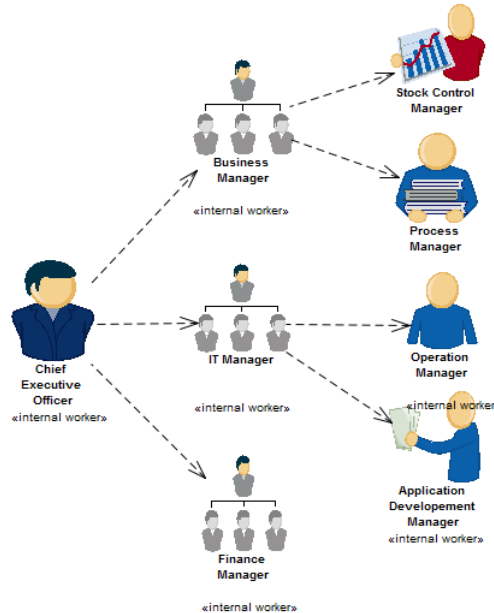


4. Click on the icon with the two green arrows to reload the Diagram Filters and reset the diagram.

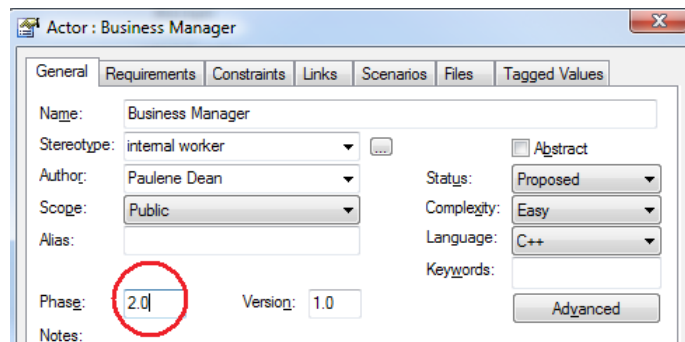


Comparing Project Phases

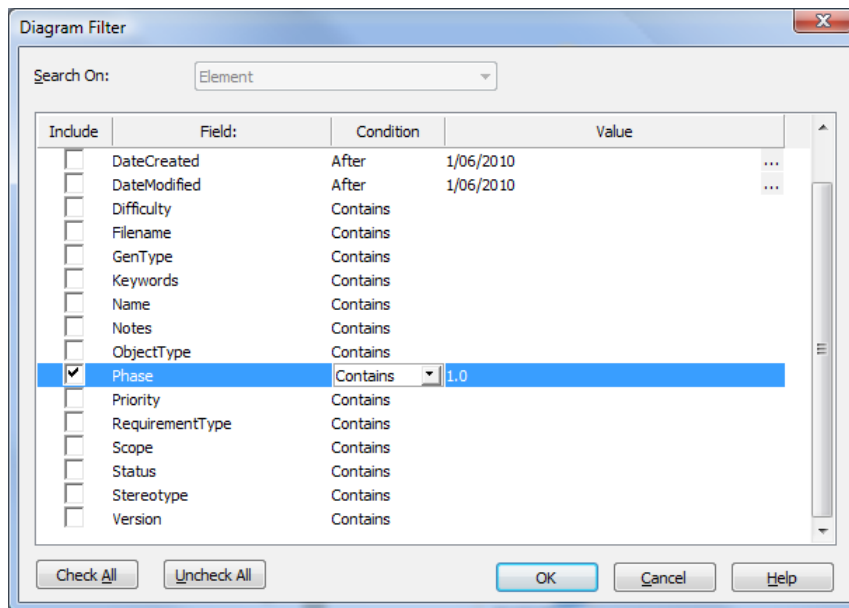
From the Project Browser, double-click 'Diagram using Images' followed by the 'Stakeholders' diagram.



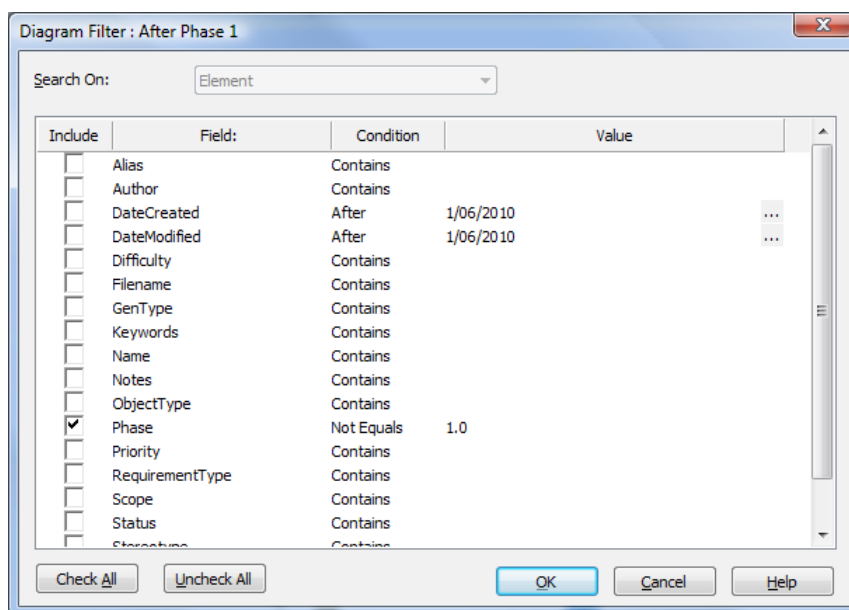
1. Access the properties Business Manager and set the Phase Property equal to 2.0 as shown below.



2. Repeat this process to set the Phase Property of the IT Manager and Finance Manager equal to 2.0.
3. Now set the Phase Property of the Stock Control, Process, Operation and Application Development Manager equal to 3.0.
4. We can now use Diagram Filters to compare each phase of the project.
5. Create a Diagram Filter called "Phase 1" and set the Value shown below.



6. Create a second Diagram Filter entitled “After Phase 1”. This time select the option of Phase “Not Equal” to 1.0.



7. Finally create Diagram Filters to display all elements in Phase 2 and Phase 3 of the project.
8. You can now easily compare each Phase of a project by enabling a Diagram Filter.



Section Review



What have we learned?

The purpose of this Quick Start Guide was to demonstrate how easy it is to create and use Diagram Filters. The information provided by Diagram Filters can be quite powerful and can be used to compare phases of a project. This is ideal for comparing 'as-is' and 'to-be' architectures. Alternatively, you can quickly identify changes to a diagram after a given date or highlight any items with a given Status or Priority.