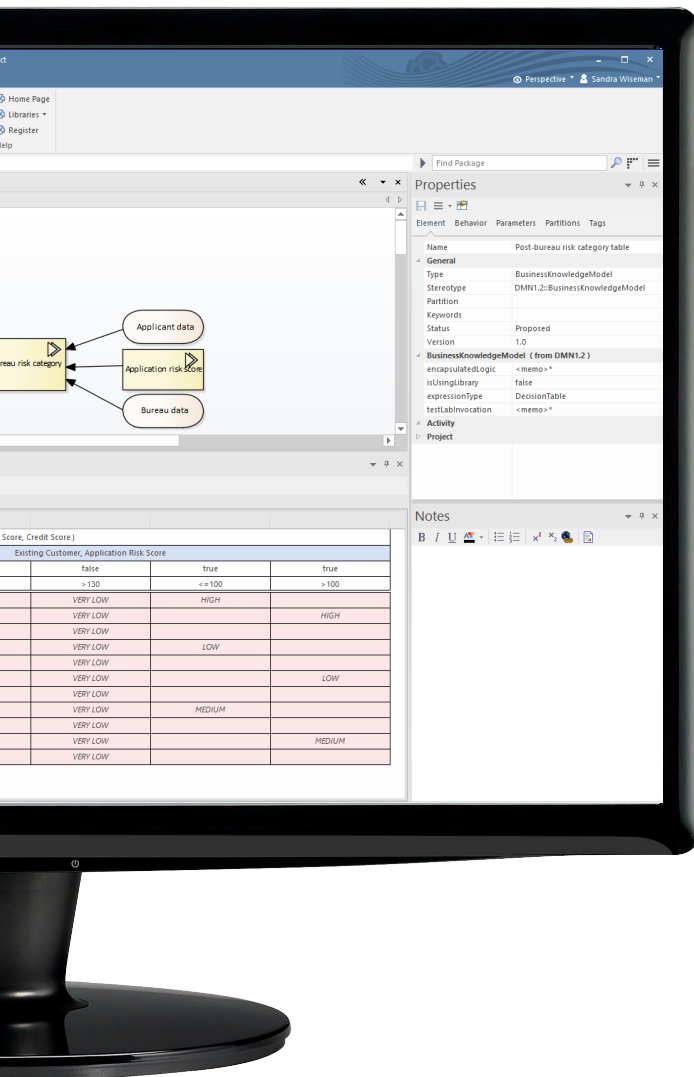
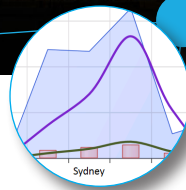




ENTERPRISE ARCHITECT



Create, Analyze and Simulate Business Processes and Rules

Build and Manage Requirements

Use Enterprise Architect to build a coherent picture of a proposed system with built-in requirements management capabilities that are essential to a successful project.

- Create and view requirements directly in an Enterprise Architect model
- Build a coherent picture of a proposed system
- Identify and document relationships in a tabular format and via model/diagram
- Record essential element information such as status, difficulty and priority
- Document and trace requirements throughout the life of a project
- Verify strategic decisions and trace organizational objectives
- Capture business logic using business rules and business process models

Model | Design | Collaborate



Build



Discussions



Reviews



Comments



Trace

Working Together 'In the Model'



Seamless In-Model Collaboration

Enterprise Architect's collaboration features have been significantly improved to connect team members and keep the iterative processes of modeling and design alive and healthy.

The chat / instant messaging capabilities are now expanded to allow one-on-one conversations with any other user in the model, facilitating an instant and productive "in model" dialog.



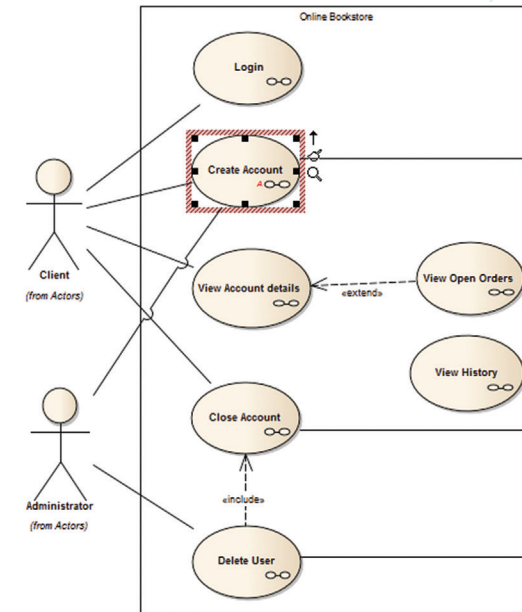
Setting Up Notifications

An all new notification system for chats and monitored discussions allows you to quickly and easily see when a new chat or discussion comes in that is relevant to you. Setting the new 'Support Collaboration' property on diagrams enables elements to show a notification icon when new chats and discussions have occurred and you are monitoring them.



Stay in Touch and Keep Informed

The new Collaborations Window collects together the running history and moment to moment changes of the four central aspects of model based collaboration. Manage hundreds of ongoing discussions and jump to the related model element in a single click, to always have context when discussing your model or business solutions.



Use Cases and User Stories

Develop Use Cases and User Stories to model system behavior and analyze how users interact with a system to achieve real world goals. Use alternative images to represent model elements that create realistic, yet easy to understand system models.

Analyze Business Processes

Document existing business processes, simulate and execute process flows. Industry-standard process modeling tools including BPMN and flow charts allow you to review future business needs. Configure simulations with BPSim. Exchange model information via BPMN XML Import/Export.



Explore and Visualize

Version 15.2 introduces new windows, new behavior and improved ways of maximizing your modeling time. New tools such as the Focus Window take you back into the model and keep you in touch with recent developments. Old favorites such as the Element Browser have been given a fresh new look and location.

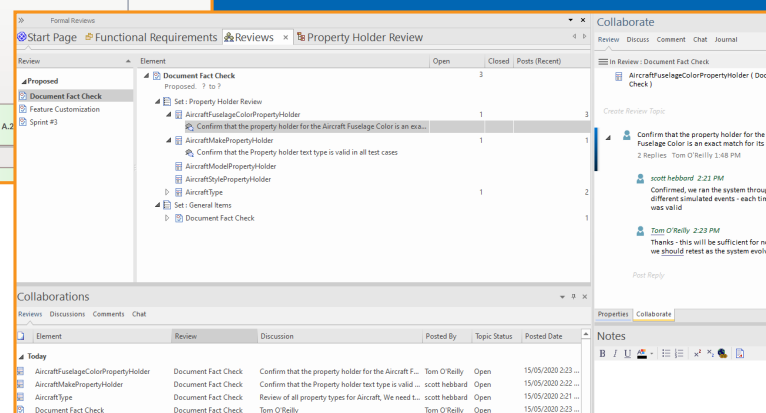
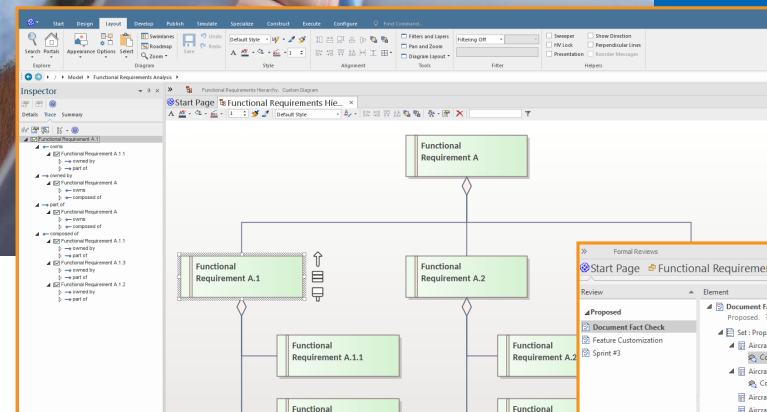
- A new Focus Window empowers your modeling
- The Inspector Window lets you get into the smallest details
- Dashboard diagrams automatically layouts elements

Streamlined & Improved Reviews

A clearer, more intuitive interface for model based reviews.

Reviews now have a cleaner user interface with extra filtering configurations. This allows you to pinpoint the desired review

by its status, or show all reviews created, both current and past. The user interface has also been enhanced to easily identify reviews that have been locked but not approved by all approvers.



Strategic Modeling

Identify and establish meaningful strategic links between corporate strategy, operations, business rules and business process improvements. Leverage strategic planning tools such as a Balanced Scorecard, Decision Trees, Value Chains, Strategy Maps and Organizational Charts.

Screen Prototyping

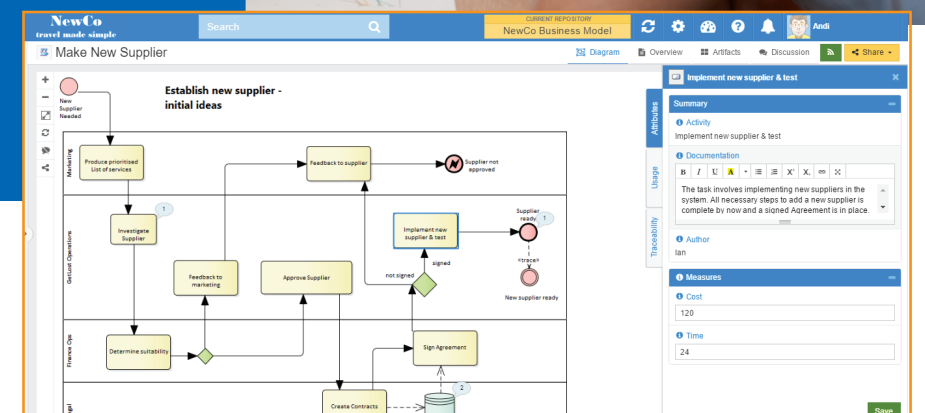
Create rich screen prototypes for the web, mobile devices and other user interfaces. Link wireframes to Requirements, Use Cases, Scenarios and more. Elicit feedback, verify design elements, engage key stakeholders to enhance requirement management.

Prolaborate

View Enterprise Architect Models anywhere and anytime in your PCs and iPads. No thick client software required!

Prolaborate allows users to create a tailored set of views that reduce complexity, focus attention and increase the accessibility of model information for the non-modeling community who are more concerned with consuming the models.

Prolaborate also provides dashboards, impact analysis, gated reviews and much more to leverage information from the model to provide unique windows into the model for a custom audience.



New and Expanded Support for Process Modeling

Testing

Enterprise Architect enables you to define test specifications, execute tests and record results directly from model elements.

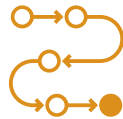
Using Enterprise Architect's Structured Scenarios you can automatically generate Test Case descriptions.



Testing

Simulation

Enterprise Architect's Model Simulation helps verify system behavior and manage complexity. Visualize outcomes before resources are committed. Gain a better understanding of how your systems work.



Process Simulation

Traceability

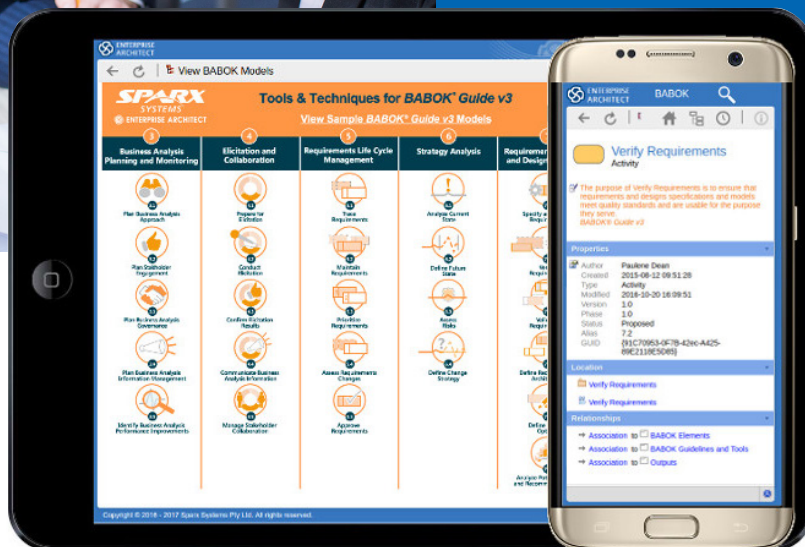
Enterprise Architect provides flexible and expressive features that help you to explore and traverse your project, including the Traceability Window and the Relationship Matrix. Enterprise Architect can trace between any sort of model elements be it Requirements, Use Cases, User Stories, Mind Maps, BPMN, Process Diagrams, Documents and more, which is a powerful mechanism for the analyst.



Tools & Techniques for BABOK® Guide v3

Business analysis and collaboration solution for the global business community.

Sparx Systems, together with the International Institute of Business Analysis™ (IIBA®), has released the reference model for IIBA's Business Analysis Body of Knowledge® (BABOK® Guide v3), supported by Sparx Systems Pro Cloud Server and MDG Technology within Sparx Systems Enterprise Architect.



Learn more about Business Analysis: www.sparxsystems.com/ba