

Requirements Management

Tools to help you capture, manage and trace Requirements across the Development Lifecycle

Gathering your Requirements

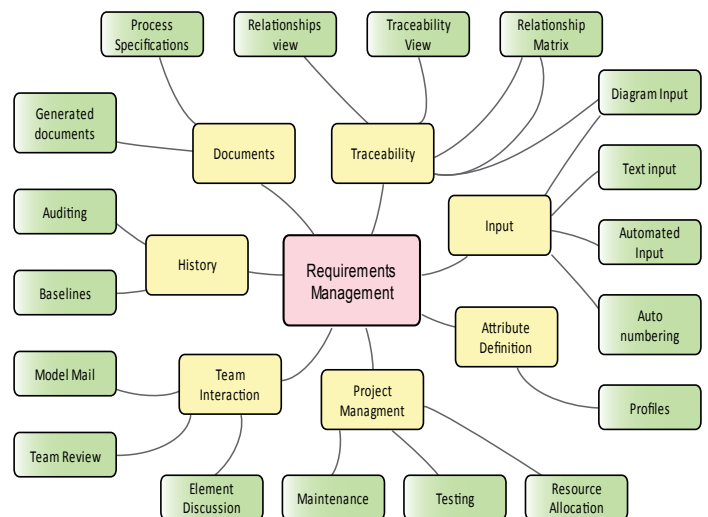
- Drag and drop Requirements from written documents onto diagrams to automatically create requirement elements
- Link written Requirements and user stories as linked documents from model elements
- Import Requirements from an external CSV file

Modeling your Requirements

- Choice of features for any Requirements management process, from planning through to product support
- Display requirement information in different formats
- Tame complex Requirements with features like baselining, nesting, traceability, full reporting and graphical management
- Trace Requirements to use cases (even at a flow level), test cases, and analysis or design elements
- Document any Requirements from formal business Requirements, to performance or security Requirements

Visio Migration

- Import Requirements, Use Case Diagrams and Activity Diagrams from Visio
- Use Enterprise Architect to link and enhance the Visio diagrams, for traceability



Managing your Requirements

- Successful management of changing Requirements increases project success
- Enterprise Architect offers full graphical management and reporting of Requirements including baselining, nesting and traceability

Developing your Requirements

- Discover - Techniques to capture, write and review Requirements specifications
- Evaluate - Find solution options based on business needs and benefits
- Record - Maintain consistency and cohesion while removing ambiguity
- Document and Validate - Communicate and exchange via a variety of methods

BABOK Reference Model

The Requirements Management function is also extensively covered in the Enterprise Architect BABOK Reference Model

“I love this tool. I've been more productive within the first 30 minutes of installing than I ever have with Visio.”

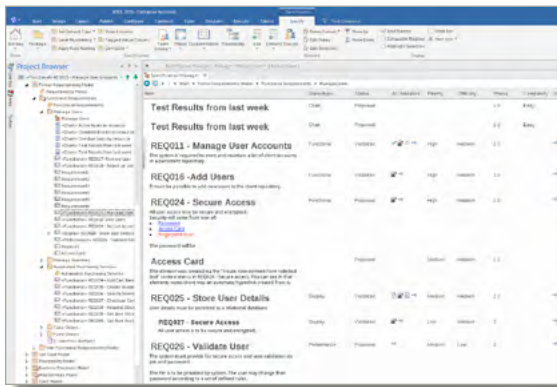
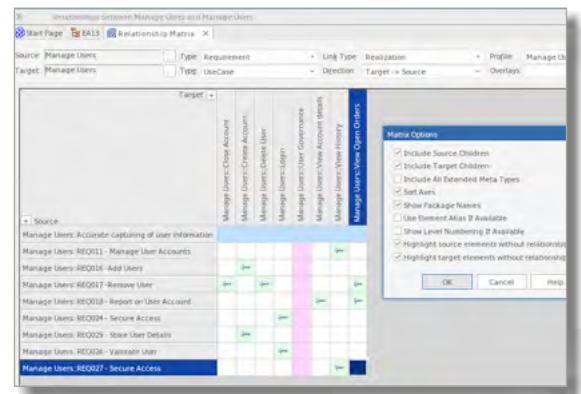
Phil Boyd, IT/FFA, Sr. Sys. Consultant

PRODUCTIVITY TOOLS

Requirements Engineering is critical to project success

Relationship Matrix

- Quickly find which elements in the model realize (implement) the Requirements
- Trace Requirements to stakeholders, then to a set of drivers and goals, and to a set of regulatory constraints
- Automatically highlight elements, that have no Requirements



Specification Manager

- Convenient word processor interface to enter, view and manage Requirements in textual form
- In line editing of Requirement properties such as Status, Priority and Author in-line
- Apply filters on multiple properties to help manage large sets of Requirements

Time Aware Models

- Powerful and expressive techniques for defining and visualizing how Requirement models change over time
- Let Enterprise Architect simplify the complex task of maintaining the relationships between previous versions
- See those elements and features that are changed, deleted or added at a point in time
- Clone packages, diagrams or elements in a model

