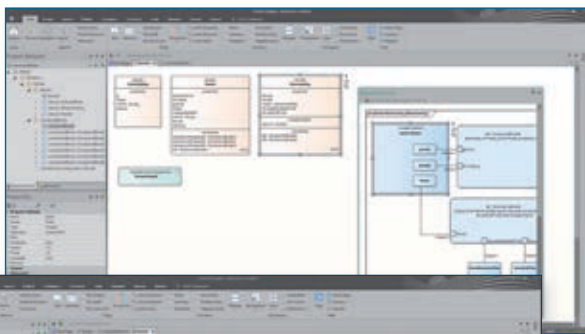




SysML™

Robust Team Based Systems Engineering

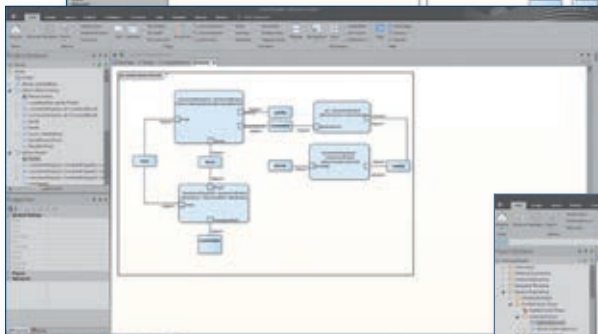


Specify, analyze and design large scale systems using SysML with Enterprise Architect.

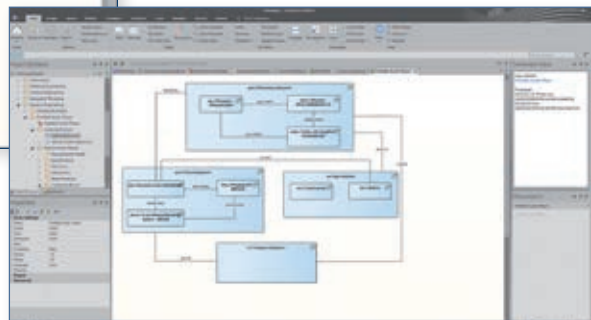
Enterprise Architect's tightly integrated SysML implementation provides a rich, team-based modeling environment for Systems Engineering to help engineering to specify requirements, design robust systems and model with all 9 SysML diagrams.

Enterprise Architect offers Comprehensive Modeling Process with a rich set of Model Patterns for quick starts of new SysML Projects.

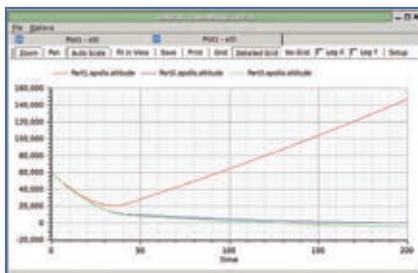
Easy to set up Simulations can be achieved using the Process Guidance Feature in Enterprise Architect 15.2



Create Constraint models to describe the systems operating characteristics using parametric models in few steps with Enterprise Architect



Create an Operational Domain model, which describes the environment, the system operates within in few steps with Enterprise Architect



Simulate with OpenModelica

Rapid and robust evaluation of SysML models

- Simulate and graph
- Describe and annotate
- Generate OpenModelica code
- Extensive resources Library

www.sparxsystems.com/openmodelica



www.sparxsystems.com/sysml



Download your FREE trial at: www.sparxsystems.com/trial

SysML™

Enterprise Architect delivers the ultimate modeling solution for Systems Engineering!

Comprehensive Project progression

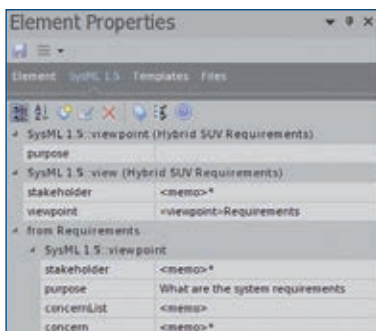
Specify system behavior with SysML Requirements. Design nested systems and subsystems with SysML Blocks and Parts. Analyze system-to-system behavior using Interaction Diagrams, Activities and State Machines.

Define system dynamics and enforce correctness with Parametric and Constraint blocks.

SysML Conformance

All SysML diagrams in Enterprise Architect display a diagram frame by default. This frame expands automatically as the diagram area increases.

The dynamic SysML properties window gives you instant access to the most widely used SysML related properties.



Document your SysML projects

High quality engineering documentation can be generated out-of-the-box using a wide range of built-in templates, carefully crafted to extract the information in the models and present it in visually compelling and high quality documentation in a wide range of formats, including docx, pdf and html.

Collaborate & Integrate



UML and SysML are trademarks of Object Management Group, Inc. in the United States and/or other countries.



Feature Highlights:

- Visualize and trace formal requirements.
- Create Parametric model simulations.
- Bring your State Machines and Activities to life with advanced simulation support for triggers, signals and events.
- Executable code generation from State Machines.
- Covert SysML 1.1, 1.2, 1.3, and 1.4 models to SysML 1.5 using Sparx Systems' migration scripts.
- Display nested elements with Structure Compartments.
- Model Patterns for quick starts of new SysML Projects.
- New dedicated SysML docked property for SysML constructs

Sparx Systems Pro Cloud Server enables connecting to other Enterprise Architect Cloud based projects. This immediately opens up the possibility of partitioning Systems Engineering Modeling assets across multiple models and providing cross references and linkages between models. Modelers can develop new scenarios and projects that reference core related elements in multiple existing models.

Radically transform the business value of SysML