



Enterprise Architect

User Guide Series

Publish to Joomla!

Sparx Systems Enterprise Architect supports publishing an entire model, or part of the model, in a local Joomla! Repository as Articles (HTML pages), where the outline structure mirrors the model hierarchy, making it easy to explore models on-line.

Author: Sparx Systems

Date: 2021-09-02

Version: 15.2

CREATED WITH  ENTERPRISE
ARCHITECT

Table of Contents

Publish to Joomla!	4
Install Joomla! Locally	6
Set up a Joomla! ODBC Link	13
Publish as Joomla! Article	17
Joomla! Content Templates	24
Example - Package Published as Joomla! Article	27
Enable Search in Joomla! Website	30

Publish to Joomla!



Enterprise Architect provides a facility for publishing model content as Articles (HTML pages) in a local Joomla! installation. As you develop your model you can publish it in the local Joomla! Repository, where the outline structure closely mirrors the model hierarchy and makes it very simple to explore models on-line. You can publish either an entire model or a single branch of the model into the local Joomla! Repository. This local Repository can then be easily transferred to a live Joomla! Server.

Publish model content into Joomla!

To publish the content of a model as Articles in Joomla! you work through these stages:

Stage	Action
1	Install Joomla! locally and create a Joomla! repository.
2	Set up an ODBC link to the created

	Joomla! repository.
3	Connect to the Joomla! repository from Enterprise Architect and publish Articles.
4	(Optional) Transfer the local Joomla! site to a live Joomla! server. (See <i>Learn more.</i>)

Notes

- Publish to Joomla! is supported in all Editions of Enterprise Architect
- In the Corporate, Unified and Ultimate Editions of Enterprise Architect, if security is enabled you must have 'Generate Documents' permission to Publish as Joomla! Article

Install Joomla! Locally

Before you can publish model contents as Joomla! Articles, you must install Joomla! locally on your workstation.

There are three stages in the process of installing Joomla! locally:

1. Download and install software that Joomla! requires to run locally
2. Download and install Joomla! itself
3. Configure Joomla! and create a MySQL repository into which to publish the Articles

Stage 1: Download and install software that Joomla! requires to run locally

Step	Action
1	<p>Joomla! depends on these software applications to run locally:</p> <ul style="list-style-type: none">• Apache web server• MySQL DBMS• PHP scripting language <p>If you do not already have these applications, you must install them on your workstation. To do this, you can use a solution package such as XAMPP,</p>

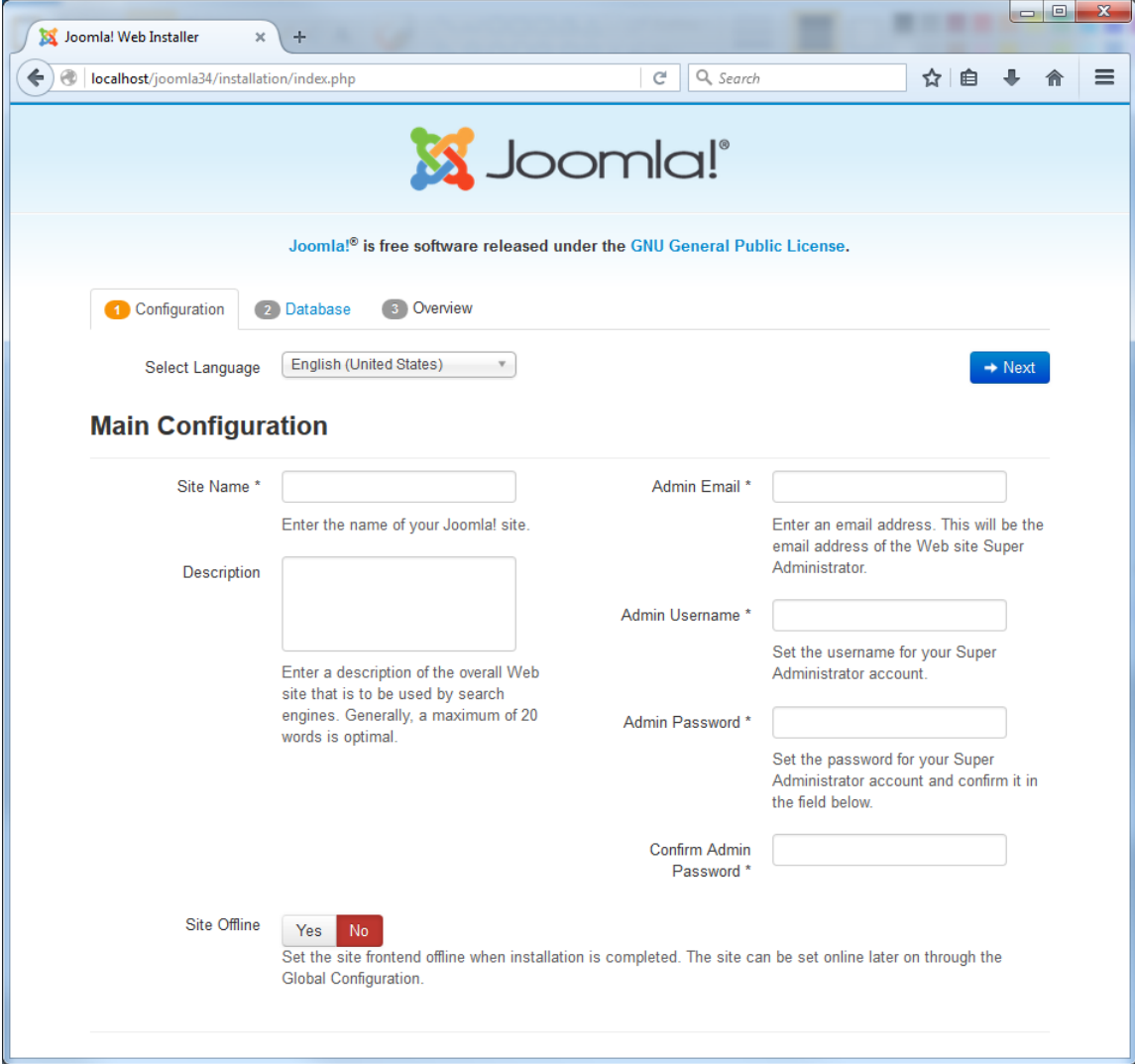
which you can download from [this site](#).
The instructions for installing XAMPP are available [here](#).

Stage 2: Download and install Joomla!

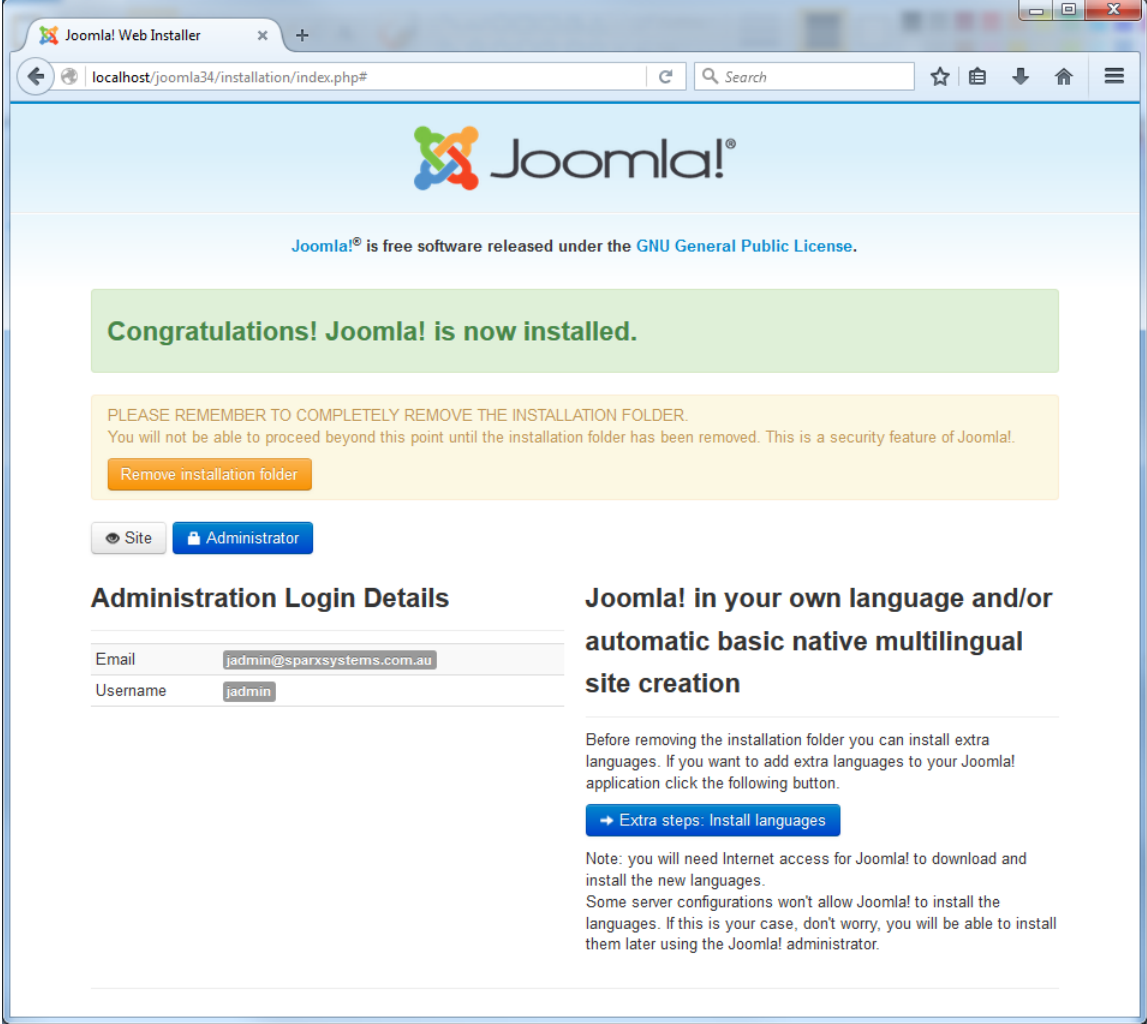
Step	Action
1	<p>In the xampp\htdocs folder, create a folder for the Joomla! installation (so, if you have installed XAMPP in the default location then create the folder under c:\xampp\htdocs).</p> <p>Give this folder a suitable name.</p> <p>Note - this folder name will be used as the Joomla! Repository name in the MySQL database in Stage 3.</p>
2	<p>Download the Joomla! Full package from here.</p>
3	<p>Unzip the contents of the downloaded .zip file into the Joomla! folder you created in Step 1.</p> <p>For detailed instructions on installing Joomla! locally, refer to the section Download and install Joomla!.</p>

Stage 3: Configure Joomla! and create a MySQL repository in which to publish Articles

Step	Action
1	Check that the Apache and MySQL modules are running in the 'XAMPP Control Panel'.
2	Open a web browser and type in the URL: http://localhost/<joomla_folder_name> where <joomla_folder_name> is the name of the Joomla! folder that you created in Stage 2. The Joomla! Web Installer page displays.

	
3	<p>Complete all the required fields on the 'Main Configuration' tab, and click on the Next button. The 'Database Configuration' tab displays.</p>
4	<p>Complete the fields on the 'Database Configuration' tab as shown:</p> <ul style="list-style-type: none"> • Database Type = MySQL • Host Name = localhost • Username = database user (the default MySQL user is root)

	<ul style="list-style-type: none">• Password = database user password (the default MySQL user root has no password)• Database Name = this must be same as the name of the Joomla! folder you created earlier in Step 1 of Stage 2 <p>Click on the Next button; the 'Finalization' tab displays.</p>
5	<p>On the 'Finalization' tab, in the 'Install Sample Data' section, select the 'None' option.</p> <p>Click on the Install button to initiates the Joomla! repository creation process.</p>
6	<p>When the Joomla! repository installation is complete, the 'Congratulations' and 'Administration Login Details' panels display.</p>

	 <p>The screenshot shows the Joomla! Web Installer interface in a web browser. The browser's address bar shows 'localhost/joomla34/installation/index.php#'. The Joomla! logo is at the top, followed by the text 'Joomla!® is free software released under the GNU General Public License.' Below this is a green box with the message 'Congratulations! Joomla! is now installed.' A yellow box contains a warning: 'PLEASE REMEMBER TO COMPLETELY REMOVE THE INSTALLATION FOLDER. You will not be able to proceed beyond this point until the installation folder has been removed. This is a security feature of Joomla!.' Below the warning is an orange button labeled 'Remove installation folder'. There are two buttons: 'Site' and 'Administrator'. Under 'Administration Login Details', there are input fields for 'Email' (jadmin@sparxsystems.com.au) and 'Username' (jadmin). To the right, there is a section titled 'Joomla! in your own language and/or automatic basic native multilingual site creation' with a note about installing extra languages and a blue button labeled 'Extra steps: Install languages'.</p>
7	<p>Click on the Remove Installation folder button, and then on the Site button. This opens the Joomla! site, which is now ready to receive the Articles that you create.</p>

Notes

- Enterprise Architect has been tested with Joomla! versions 3.4/3.5/3.6 and XAMPP versions 5.6.12/5.6.23

(XAMPP Control Panel version 3.2.1/3.2.2 respectively)

Set up a Joomla! ODBC Link

After you have created a Joomla! repository in your MySQL database, you must set up the MySQL ODBC driver so that you can connect to this repository from Enterprise Architect and publish model contents as Articles.

Prerequisites

Install:

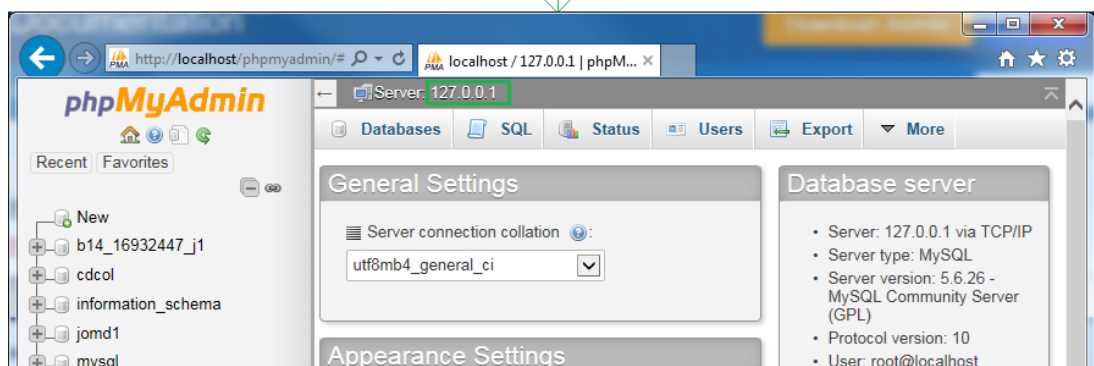
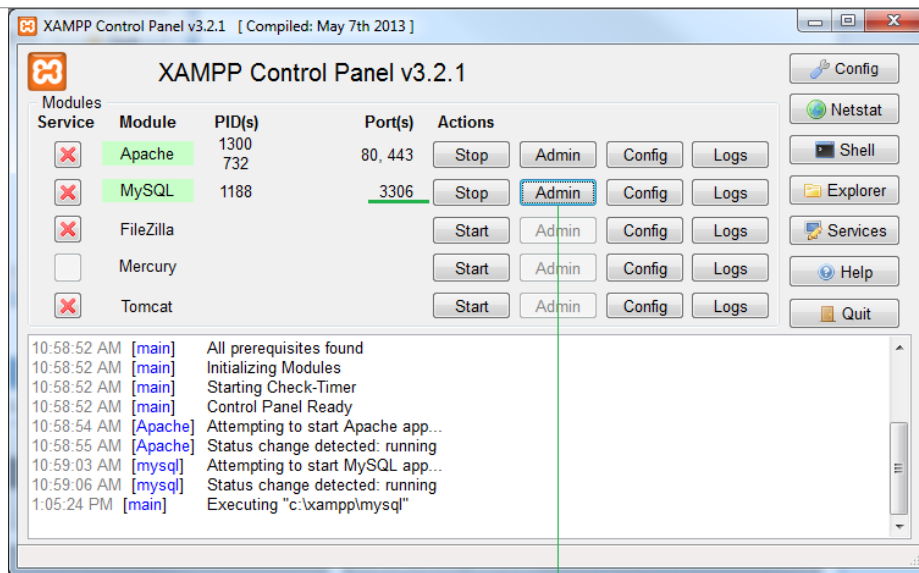
- MySQL DBMS (this will be part of the XAMPP installation)
- MySQL ODBC driver software version 5.3.4 or higher

Set up the ODBC Driver

Your MySQL ODBC driver is now available to connect to the Joomla! Repository from Enterprise Architect.

Step	Action
1	Under both 32-bit and 64-bit operating systems, Enterprise Architect requires 32-bit ODBC drivers to connect to a repository through ODBC. You can quickly load the correct 32-bit ODBC Data Source

	<p>Administrator by selecting the 'Configure > User Tools > ODBC Data Sources' ribbon option.</p> <p>The ODBC Data Source Administrator window displays.</p>
2	<p>Click on the Add button in 'User DSN' tab of the dialog. The 'Create New Data Source' dialog displays, through which you add a new DSN.</p>
3	<p>Click on the appropriate MySQL ODBC driver in the list, and click on the Finish button.</p> <p>The 'MySQL Connector/ODBC' dialog displays.</p>
4	<p>Enter these configuration details:</p> <ul style="list-style-type: none">• A data source name for the connection• (Optional) a description of the connection• The host address of the DBMS server - – if you have installed MySQL DBMS using XAMPP, then the host address and Port can be determined as boxed and underlined, respectively, in green on these control panels:



- User name and password (the default user name for a MySQL repository is **root** with no password)
- The database name on the selected server - this name will be the name of the Joomla! folder you created when you installed Joomla! locally

5 Click on the Details>> button to set the advanced options.

6 Select these checkboxes (where provided):

- 'Return matched rows instead of affected rows' ('Conversion' or 'Cursors/Results' tab)

	<ul style="list-style-type: none">• 'Allow big result sets' ('Connection' tab)
7	Click on the Test Connection button to confirm that the configuration is correct.
8	If the test succeeds, click on the OK button to complete the configuration. If the test fails, review your settings.

Publish as Joomla! Article

Enterprise Architect Models can be published as Articles (HTML page) in a local Joomla! installation, using the 'Publish as Joomla! Article' dialog. All child Packages of the selected Package will be automatically included for publishing.

Prerequisites

- Install Joomla! locally and create a Joomla! repository
- Set up an ODBC link to the Joomla! repository

Access

In the **Browser window**, click on the Package to be published.

Ribbon	Publish > Model Reports > HTML > Publish to Joomla! or Specification-Specify > Element > Documentation > Publish as Joomla! Article
--------	--

The 'Publish as Joomla! Article' dialog

Publish as Joomla! Article

Package:

Joomla! QDBC Link: ...

Joomla! Folder: ...

Joomla! User:

Options

Content Template : ...

Diagram Theme :

Sub-menu Items :

External Hyperlink Target :

Include

☒ Project Management Items ☒ Maintenance Items





☒ Test Cases ☒ Non Printable Elements

Progress:

Create Joomla! Articles

Use the 'Publish as Joomla! Article' dialog to capture the Package contents as a Joomla! Article.

Field/Button	Action
Package	Displays the name of the

	<p>currently-selected Package.</p> <p>If this is not the required Package, click on the  button and select the correct Package.</p>
Joomla! ODBC Link	<p>Click on the  button to browse for and select the Joomla! ODBC Link.</p>
Joomla! Folder	<p>Click on the  button to select the Joomla! Folder in your file system.</p> <p>Note that this folder should have the same name as the database in the selected Joomla! ODBC Link, and will usually be located at <i>C:\xampp\htdocs</i> (if you have installed XAMPP).</p>
Joomla! User	<p>Click on the drop-down arrow and select the user in the specified Joomla! Repository, to act as author for the created Article(s).</p>
Content Template	<p>(Optional) Click on the drop-down arrow and select a custom content template to apply, in place of the default content template.</p> <p>Use the '<default>' value for the standard, system-provided content template.</p> <p>Click on the  button to open the 'Joomla Content Template' dialog for creating,</p>

	modifying, and deleting content templates.
Diagram Theme	<p>Click on the drop-down arrow and select a Diagram Theme to apply the color, line thickness and font style to the diagrams of elements in the article, if those elements are using default values.</p> <p>If you set the field to '<none>' the system default theme defined in the 'Preferences' dialog, 'Diagram > Themes' page will be applied.</p>
Sub-menu Items	<p>Click on the drop-down arrow and select whether to show/hide sub-menu items.</p> <ul style="list-style-type: none"> • Hidden - sub-menu items are visible only when a parent menu item is clicked • Visible - sub-menu items are always visible
External Hyperlink Target	<p>Click on the drop-down arrow and select whether to show external hyperlinks in the same window or tab, or in a new window or tab.</p> <ul style="list-style-type: none"> • <u>_</u>blank (New window) - opens the hyperlink in a new window or tab • <u>_</u>self (Same frame) - opens the

	hyperlink in the same window or tab
Include	<p>Select the appropriate checkboxes to include, in the published Article:</p> <ul style="list-style-type: none"> • Project Management Items – element Resource Allocation, Efforts, Risks and Metrics • Test Cases – element Test Cases • Maintenance Items – element Changes, Issues, Defects, Tasks, Decisions and Events • Non Printable Elements – elements that are set as non-printable on the diagram
Publish	<p>Click on this button to publish the selected Package as a Joomla! Article. Messages concerning the progress of publishing are displayed in the System Output window.</p>
View	<p>Once the publishing process has completed, you can click on this button to launch your default web browser and view the published Article.</p> <p>The Article will be found under the URL:</p> <p><code>http://localhost/<joomla_folder_name>/</code> where <code><joomla_folder_name></code> is the</p>

	name of the selected Joomla! folder.
Close	Click on this button to close the 'Publish as Joomla! Article' dialog.
Help	Click on this button to display this Help topic.

Notes

- Publish to Joomla! is supported in all Editions of Enterprise Architect
- In the Corporate, Unified and Ultimate Editions of Enterprise Architect, if security is enabled you must have 'Generate Documents' permission to Publish as Joomla! Article
- Model items published as Joomla! Articles will be displayed in the **System Output** window – double-click on a Package, element or diagram in the System Output window to highlight it in the **Browser window**
- When publishing large models, it is recommended that you hide the sub-menu items; the option 'Sub-menu Items' is similar to Lazy Load in Enterprise Architect - when sub-menu items are hidden, the 'EA Browser window' menu will initially show only the top-level menu items; clicking on a top-level menu item will then show the child

menu items, if any

- If the parent Package of the Package being published in the Enterprise Architect model already exists in Joomla!, then the selected Package will be published as a child of that parent Package in Joomla!
- You can search published Articles by enabling Joomla!'s built-in Search functionality in the website
- It is recommended that you do not access or refresh the Joomla! website when articles are being published from Enterprise Architect
- If you have accidentally accessed or refreshed the Joomla! Website, or you see a PHP script error on top of the web page, log into the Joomla! 'Administrator Control Panel' and click on the Rebuild button in the Joomla! 'Menu Manager'
- The Joomla! 'Administrator Control Panel' can be accessed through this URL:
http://localhost/<joomla_folder_name>/administrator
where <joomla_folder_name> is the name of the Joomla! folder

Joomla! Content Templates

You can use the Joomla! Content Template Editor to customize the content of published Joomla! Articles.

Access

On the 'Publish as Joomla! Article' dialog, click on the 'Content Template'  button

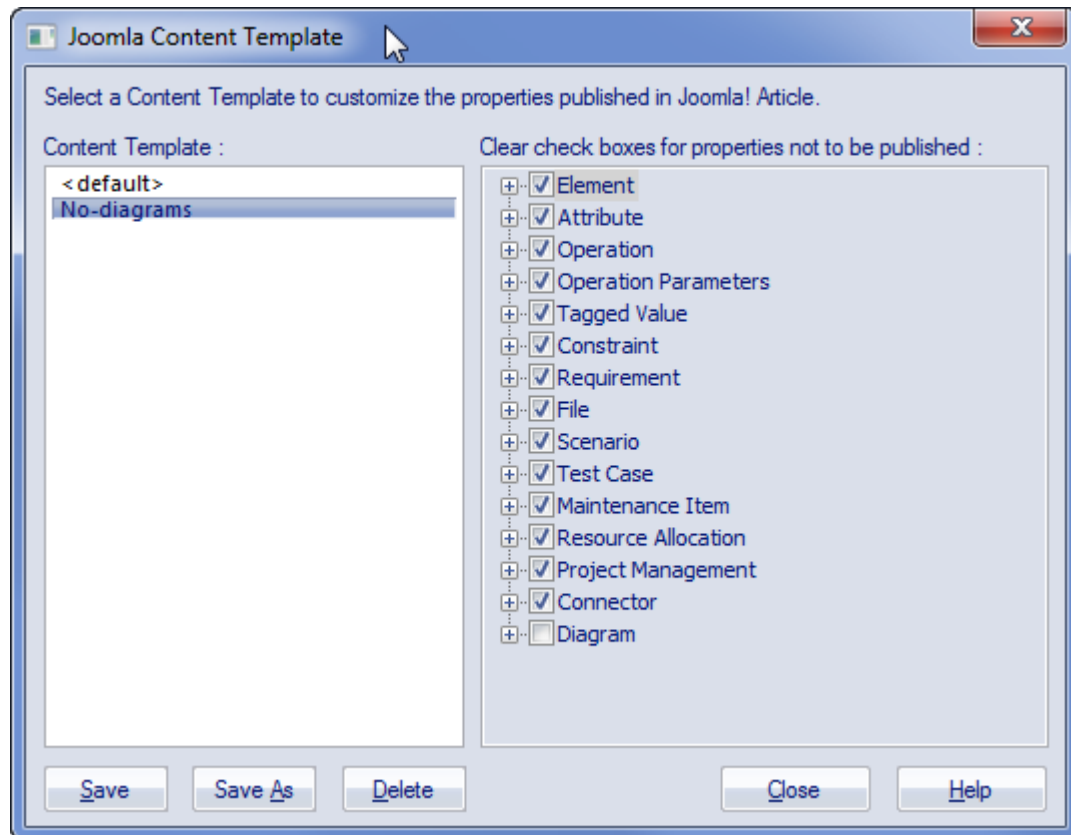
Ribbon	Publish > Model Reports > HTML > Publish to Joomla! or Specification-Specify > Element > Documentation > Publish as Joomla! Article
--------	--

Manage Joomla! Content Template

Field/Button	Action
Content Template	Lists the available Content Templates. The <default> template is a predefined system template that is protected from editing and deletion. You can copy it to

	create new Content Templates.
Clear checkboxes for properties not to be published	This panel displays a full list of the object types that are supported as content. You can click on the expansion box against an object type to display the properties of that type. Clear the checkbox against each object or property that you do not want to include in the Joomla! Articles.
Save	Click on this button to save any changes you have made to the selected content template.
Save As	Click on this button to save the changes you have made under a different template name (that is, copy the selected template).
Delete	Click on this button to delete the selected template.
Close	Click on this button to close the 'Joomla! Content Template' dialog.
Help	Click on this button to display this Help topic.

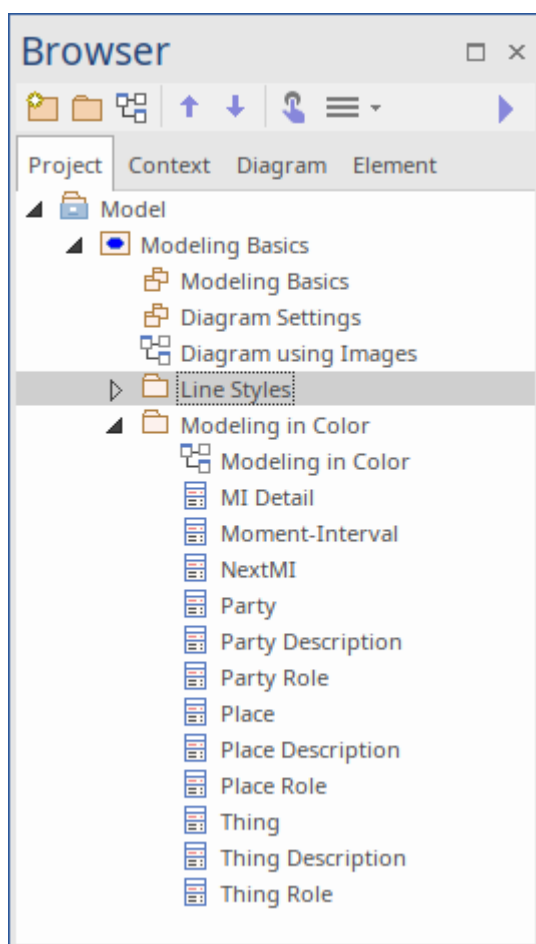
The 'Joomla! Content Template' dialog



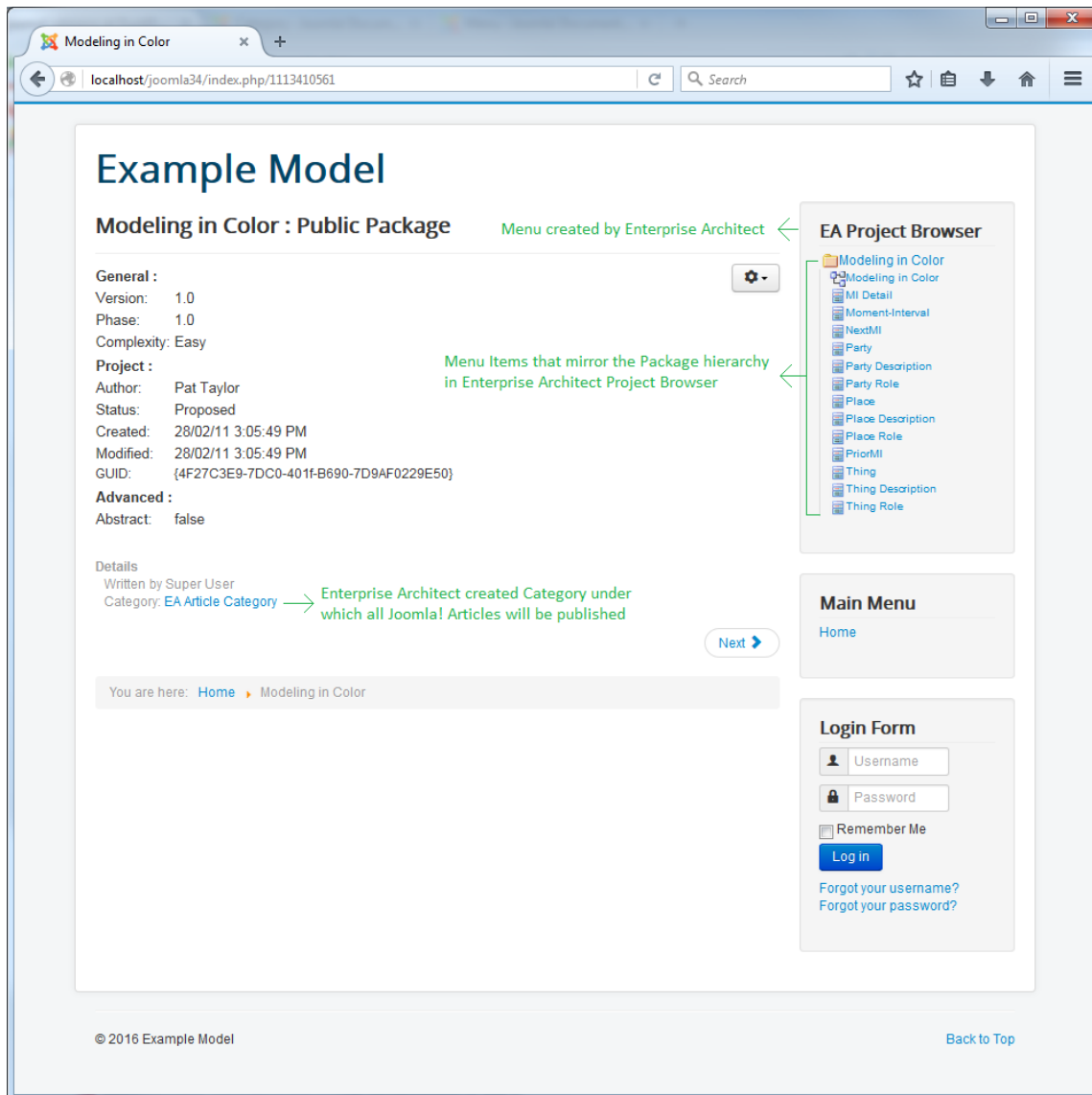
Example - Package Published as Joomla! Article

This example shows the Package 'Modeling in Color' published as a Joomla! Article.

This is the expanded Package as it appears in the Enterprise Architect **Browser window**:



This is the Package as it appears as a Joomla! Article on the Joomla! site:



Notes

- When a Package is published as a Joomla! Article, Enterprise Architect will:
 - Create a Joomla! *Category* called 'EA Article Category', and publish all the Articles under this category
 - Create a Joomla! *Menu* called 'EA Project Browser' and add menu items for each Article published

- If the 'EA Project Browser' menu already exists when you publish a Package, then Enterprise Architect will reuse this menu and will update it with new menu items

Enable Search in Joomla! Website

Once Enterprise Architect models have been published as Articles (HTML pages) using the 'Publish as Joomla! Article' dialog in the local Joomla! installation, you can search for items within these Articles using Joomla!'s built-in Search facility.

Prerequisites

- Install Joomla! locally and create a Joomla! repository
- Set up an ODBC Link to the created Joomla! repository
- Publish model content as a Joomla! Article

Enable the Joomla! Search Facility

Step	Action
1	<p>Open the 'Joomla! Administrator Control Panel' using this URL:</p> <p><code>http://localhost/<joomla_folder_name>/administrator</code> where <code><joomla_folder_name></code> is the name of your Joomla! folder.</p>

2	Select the 'Extensions Modules' menu option.
3	Click on the New button and select the 'Search' option.
4	Type in a title (such as 'Search'), select a position in the 'Position' drop-down field (this determines where the 'Search' text box is displayed in the website), and click on the Save & Close button .
5	<p>Access the Joomla! website by typing this URL in the 'Web Address' field:</p> <p>http://localhost/<joomla_folder_name></p> <p>where <joomla_folder_name> is the name of your Joomla! folder.</p> <p>You will now see a 'Search' text box displayed.</p>

