



Enterprise Architect

User Guide Series

# The Model Wizard

How to create a model quickly? In Sparx Systems Enterprise Architect, the Model Wizard provides Patterns from a wide range of technologies, to help you quickly generate basic models, diagrams, processes, starter projects and execution analysis models.

Author: Sparx Systems

Date: 2022-04-19

Version: 16.0

CREATED WITH  ENTERPRISE  
ARCHITECT

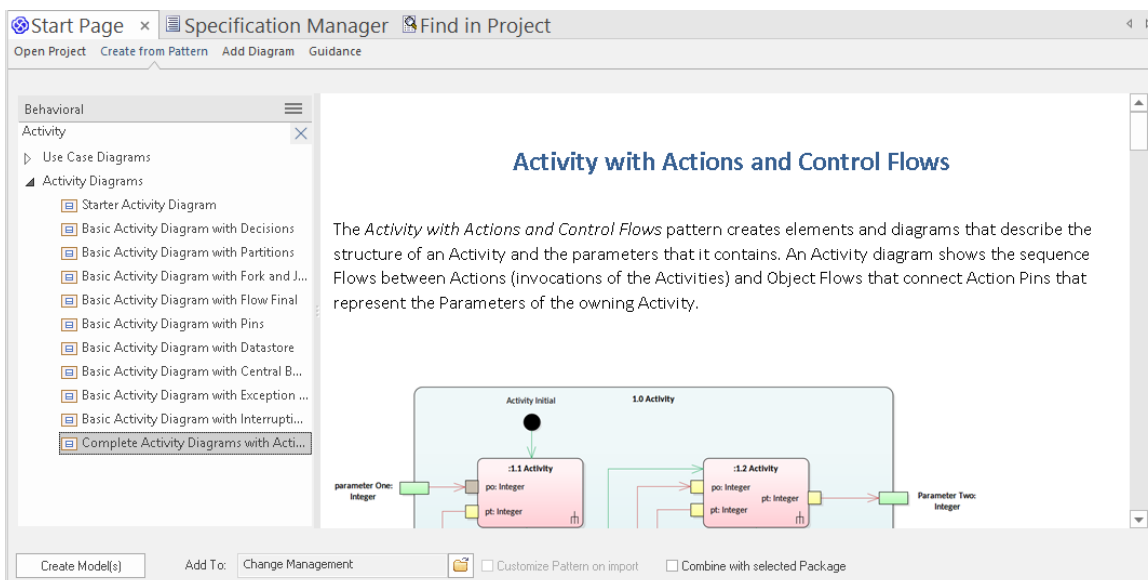


# Table of Contents

The Model Wizard .....	4
Customize Model Content .....	10



# The Model Wizard

The Model Wizard (Start Page 'Create from Pattern' tab) provides Patterns from a wide range of technologies, which you can use to quickly generate new models in your project both when you first create the project and over time. From the Model Patterns you can create basic models that you can develop further as components of your project. You click on the <perspective name> button at the top of the left-hand panel and select a Perspective Set from the list, which then shows a list of Pattern groups and the Patterns they contain. If you click on a Pattern, a description displays in the right-hand panel of the window, showing a type diagram (where appropriate) and an explanation of what the Pattern is and what it does. This description is drawn from an RTF file paired with the Pattern's source XML file.




## Access

The Model Wizard (Start Page 'Create from Pattern' tab) automatically displays when creating a new project; otherwise use these options to access it:


Ribbon	Design > Package > Model Wizard
Context Menu	Right-click on Package   Add a Model using Wizard
Keyboard Shortcuts	Ctrl+Shift+M
Other	Browser window caption bar :  Browser window caption bar :  > New Model from Pattern

## Generate a New Model

Field/Button	Action
Perspective	When you open the Start Page 'Create from Pattern' tab (Model Wizard), the Pattern groups and Patterns available for the current Perspective are listed. The display defaults to showing the groups

expanded. Initially, the current Perspective is the one shown in the  <perspective name> icon at the top right of the application screen.


If you click on the <perspective name> button, a list of all the Perspective groups displays. As you mouse-over an option in the list, the Perspectives available in that group also display. When you click on a Perspective to select it, the panel is updated with the Pattern groups and Patterns provided by the selected Perspective. As you click on a Pattern in the list, a description is provided in the right-hand panel.

Note that selecting a Perspective from the <perspective name> button list does not change the current 'global' Perspective shown in the  <perspective name> icon. If you want to re-set the Model Wizard Perspective to the global Perspective, simply click on the <perspective name> button and select 'Active'.

It is possible to make available every Pattern Group and Pattern available in the model; click on the button and select the 'All' option.

Conversely, you can restrict the list of Patterns shown by typing a text string in

	<p>the Filter Bar underneath the button. Only Patterns that have that text string in their name are listed. This is also a useful tool for locating specific Patterns when you are not sure where they are held - select 'All' Perspectives and type the Pattern name in the Filter Bar field. The panel lists each Pattern that has the text string in its name</p> <p>If you are a Technology Developer you can create and import your own MDG Technology, and distribute one or more custom Model Patterns from that Technology through the Model Wizard; the name of your Technology (or Technology categories) is added to the selection list under 'Specialized' for your users to access the Technology Patterns. To select a Model Pattern, simply click on it. If you want to select more than one Pattern, hold the Ctrl key down while you click on each Pattern.</p>
Create Model(s)	Click on this button to import a model structure derived from the Pattern(s) you have selected. The 'Importing Model Templates' dialog displays whilst the import is in progress, and any problems with the import are reported in the

	<p>System Output window. The generated model structure displays under your selected Package in the Browser window.</p>
Add To	<p>Displays the name of the Package you have selected in the Browser window.</p> <p>If you are using the Model Wizard by default on a newly-opened project, this field shows the Model root, 'Model'.</p> <p>If you need to change the Package to generate the model under, click on the  icon and browse for the correct Package on the 'Navigator' browser.</p>
Customize Pattern on import	<p>A Pattern can contain several Packages; select this checkbox to indicate that you will import only some of these Packages from the Pattern into your model. After you click on the Create Model(s) button, the 'Select Packages' dialog displays on which you specify which of the Packages to import.</p> <p>If you select more than one Pattern, the 'Select Packages' dialog displays for each Pattern in turn.</p> <p>If you do not select the checkbox, all Packages in each Pattern will be imported into the model.</p> <p>The option is disabled if there are too few</p>



	<p>Packages to select from, or if it is not logical to import only some of the Packages.</p>
<p>Combine with selected Package</p>	<p>Select this option to import the contents of the Pattern into the selected Package. When creating a Pattern, Enterprise Architect will normally create a new Package to represent the Pattern, as a child of the selected Package. If you select this checkbox, no new Package is created and instead the contents of the Pattern are added to the selected Package (provided that the selected Package is not a root node).</p>

## Notes

- The 'Select Package(s)' dialog does not display for some of the Simple Template and Basic Template Patterns, even if the 'Customize Pattern on import' option is selected

# Customize Model Content

When you set up a project by importing models using the Model Wizard (Start Page 'Create from Pattern' tab), you can generate the model structures from Patterns that you select in the Wizard. Each Pattern can contain a number of Packages and sub-Packages, and it is possible to select which of these Packages to add to your model and which to omit, using the 'Select Packages' dialog.

This is especially useful when setting up a new model with a reasonably complex structure, such as the TOGAF framework model. Being able to select which Packages are included and which are omitted is a good way to customize the level of implementation necessary for the current project.

## Access

Ribbon	Design > Package > Model Wizard > Select 'Customize Pattern on import' checkbox : Create Model(s) button
Context Menu	Browser window   Right-click on a Package node   Add a Model using Wizard   Select 'Customize Pattern on import' : Create Model(s) button

Keyboard Shortcuts	Ctrl+Shift+M   Select 'Customize Pattern on import' : Create Model(s) button
Other	Browser window caption bar menu   New Model from Pattern   Select 'Customize Pattern on import' : Create Model(s) button

## Select Package(s) dialog

Option	Description
Select Package(s) to import from <pattern>	<p>Shows the hierarchy of Packages contained in the Pattern, with a checkbox to the left of each item. The checkboxes are selected by default.</p> <p>Deselect the checkbox against each Package that you do not want to import.</p> <ul style="list-style-type: none"> <li>• Deselecting a Package automatically deselects all its child Packages</li> <li>• Re-selecting a Package automatically selects all its ancestor Packages</li> </ul>
OK	Click on this button to import the selected Packages from the current Pattern.

<b>Cancel</b>	<b>Click on this button to abort the creation of model structures from the current Pattern.</b>
---------------	---

